

USB ELECTRIC POWER SUPPLY

No. 1/2

CODE : 80-757-13110

APPLICATION : SUPER CUB C125 (JA58)

● Thank you for purchasing Kitaco product. Read and understand the instruction before installing.

ATTENTION (MUST READ)

- Please ask authorized mechanic for assembling and setting. Ask a specialist at specialty shop if you do not understand the role of the surrounding parts.
- This product is precision equipment, do not apply excessive force, it might cause of trouble. Do not modify the way which is not listed or it will cause damage and trouble.
- We are not responsible for violation of law or damages and accidents caused by assembling mistake and improper setting.
- Refer to the manufacturer service manual when installation.
- Bolts and nuts may get loosen by engine vibration. Make sure not to loosen any bolts and nuts before driving.

ATTENTION (MUST READ)

▼ OPERATING ENVIRONMENT (We cannot guarantee out of the environment below.)

This product is made exclusive for DC 12V battery vehicle. This does not operate for battery less vehicle. The lighting is a little bit darker when voltage is lower with 12V vehicle. If the battery is weak, it might over voltage by high rpm and cause of breakdown. Be careful of it.

- Avoid install and wire near the hard noise source, it might cause of trouble and break.
- This product works correctly under electrical system is genuine situation. We cannot guarantee under other special product is installed. (spark plug, plug cap, high tension code, ignition coil, HID, music product, etc.)

▼ HOW TO TAKE CARE

- Check the maximum power before using. If over powered, it might cause of trouble and break of vehicle electrical system.
- Avoid using under rain and wash. Avoid to park under the rain.
- Please wear attached rubber cap when not in use. (This is not perfectly waterproof. If water splash intensively to this product, water might enter. Be careful of it.)
- This product is precision equipment, if install to vibration spot, this cannot bring out the full potential, in the worst case, it might break. Please install with anti-vibration, etc to avoid vibration. If mount to near the engine, it might malfunction because of vibration and heat. These are not covered by warranty. Be careful of it.
- We are not responsible for directly or indirectly breaking and lost data while using this product.
- When install/remove this product, turn of both product.
- This product might not work depending on connected equipment and its situation.
- This product is not disassemble type. Do not disassemble this. It might cause of trouble and break.

SPECIFICATION

INTERFACE	USB	TYPE A × 2
INPUT VOLTAGE	DC12V	
OUTPUT VOLTAGE	DC5V	
OUTPUT CURRENT	MAX 2000mA	In case only using 1 port.
OTHER	○ Drip-proof (when using attached rubber cap/not perfectly water proof) ○ Built in LED (BLUE) ※ Condensation might occur to inside main unit (rubber cap) because of temperature changing, etc. Avoid to hard temperature changing (around engine) place, please remove water regularly. (Remove by air duster, vacuum, etc.) It might cause of trouble.	

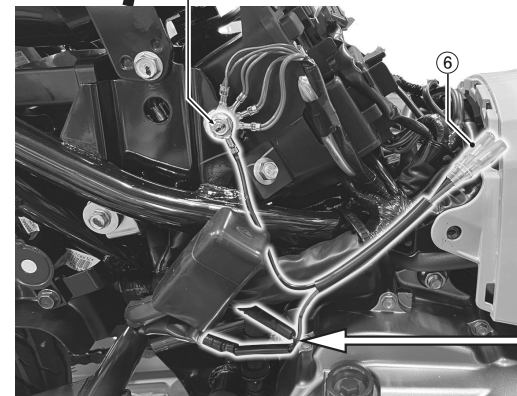
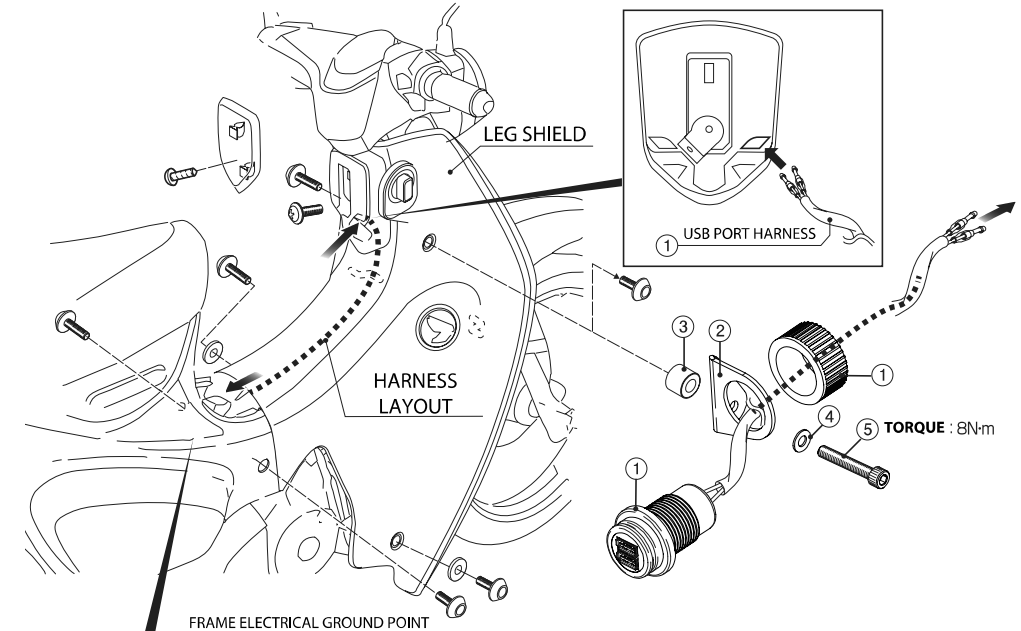
PACKING LIST

FIGURE	NAME	CODE	QTY
1	USB PORT (POWER SUPPLY) FOR CUB	757-1153001	× 1
2	STAY FOR CUB	757-1153002	× 1
3	SPACER COLLAR 6.2x13xL10	093-9000008	× 1
4	WASHER 6x13xT1.0mm	090-0900006	× 1
5	CAP BOLT M6x25	060-0500025	× 1
6	POWER SUPPLY HARNESS C125(JA58)	756-1311900	× 1

For installing this product, installing / removing outer cowls.

Refer to the No.2 outer cowls installing / removing illustration and genuine service manual when installation.

When installing harness, you can pass harness through while making space of leg shield after removing its installation bolt.

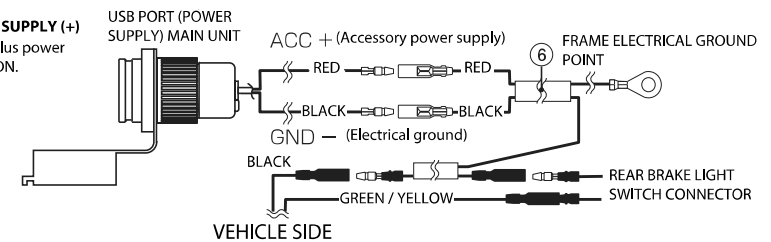


REAR BRAKE LIGHT SWITCH CONNECTOR



▼ About USB port harness

- **RED LEAD WIRE : ACC (accessory) POWER SUPPLY (+)**
Power supply wire for USB port out/input. Plus power supply (+) flows when turn ignition switch ON.
- **BLACK LEAD WIRE : POWER SUPPLY ELECTRICAL GROUND (-)**
This is electrical ground wire for USB port out/input.



211214 M-T

〒 577-0015
3-8-13 NAGATA, HIGASHI-
OSAKA, OSAKA, JAPAN



USB ELECTRIC POWER SUPPLY

No.2/2

CODE : 80-757-13110

APPLICATION : SUPER CUB C125 (JA58)

INSTALLING /REMOVING OUTER COWLS

FUEL TANK COVER

R SIDE BODY COVER

SIDE COVER
LOCK CABLE

29 N·m

