

MULTI PURPOSE BAR [VARIABLE TYPE (DEGREE ADJUSTMENT)•PIPE O.D. 22.2]

CODE : (120mm width) 80-638-13000

CODE : (130mm width) 80-638-18290

APPLICATION : MONKEY 125 (JB02/03) / CB250R (MC52) etc




APPLICATION : GB350/S (NC59)

●Thank you for purchasing Kitaco product. Read and understand the instruction before installing.







ATTENTION (MUST READ)

- This instruction sheet is for genuine condition.
- This product is for dress-up. Do not use for other purposes. Do not modify the way which is not listed or it will cause damage and trouble.
- We are not responsible for violation of law or damages and accidents caused by assembling mistake and improper setting.
- Please ask authorized mechanic for assembling and setting.
- Refer to the manufacturer service manual when installation.
- Bolts and nuts may get loosen by engine vibration. Make sure not to loosen any bolts and nuts before driving.

PROHIBITED Follow the below or may cause of breaking this product or surrounding parts.

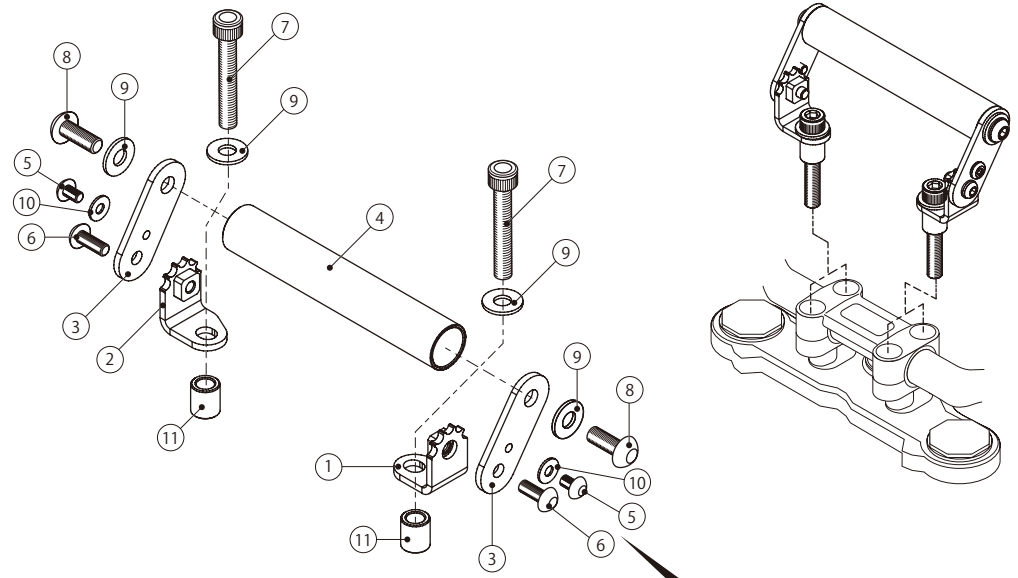
-  Do not apply excessive force, like rope or tie down belt to deliver vehicle.
-  Do not over weight. **(Weight limit : 0.5kg)**
-  Do not ride with over weighted or hanging helmet. It might cause of accident.

ATTENTION Please read before using.

-  Do not apply excessive force to prevent handling. It might cause of break or accident.
-  When installing commercial holder, install it firmly. Recommend to use prevent falling strap, etc. We are not responsible for these products.
-  Please ride under legal speed. This product is designed for flat surface. Do not use for competition or bad road riding.
-  **Do not gaze or use mobile phone, adjusting degree while riding.**
-  Do not use, keep or leave mobile phone under the direct sunlight. It might cause of break. Please follow each machine instruction.
-  Bolts and nuts may get loosen. Please check regularly before riding.

PACKING LIST

FIGURE	NAME	CODE	QTY	
			80-638-18300 120mmWIDTH	80-638-18290 130mmWIDTH
1	BOTTOM STAY (L) (5 STEPS)	638-9020001	x1	x1
2	BOTTOM STAY (R) (5 STEPS)	638-9020002	x1	x1
3	UPPER STAY (VARIABLE) (P35.4)	638-9010001	x2	x2
4	MULTI PURPOSE BAR 22.2 120mm	638-9000120	x1	-
	MULTI PURPOSE BAR 22.2 130mm	638-9000130	-	x1
5	BUTTON CAP BOLT M5x8	050-0550008	x2	x2
6	BUTTON CAP BOLT M6x12	060-0550012	x2	x2
7	CAP BOLT M8x50	080-0500050	-	x2
	CAP BOLT M8x55	080-0500055	x2	-
8	BUTTON CAP BOLT M8x20	080-0550020	x2	x2
9	FLAT WASHER 8x16xT1.2	090-0900008	x4	x4
10	FLAT WASHER 5x12xT1.0	090-0900005	x2	x2
11	SPACER COLLAR 8.2x13xT15	093-9000049	x2	x2



ADJUSTING DEGREE (5 STEPS) R SIDE STAY
(illustration is from L side.)

Loosen ⑥ pivot bolt, adjusting position by ⑤ stopper bolt, then tighten ⑥ bolt. When adjusting this product or commercial holder, do not interrupt surrounding parts or prevent from handling.

STOPPER ⑤ PIVOT BOLT ⑥

230123 Y-H

〒 577-0015
3-8-13 NAGATA,
HIGASHI-OSAKA,
OSAKA, JAPAN

