

CRANK SHAFT ASSEMBLY TOOL

CODE : 674-1432700

APPLICATION : GROM (JC61)

ATTENTION ! EXCLUSIVE TOOL FOR REMOVING / INSTALLING BEARING IS REQUIRED

- Thank you for purchasing Kitaco product. Read and understand the instruction before installing.

ATTENTIONS (MUST READ)

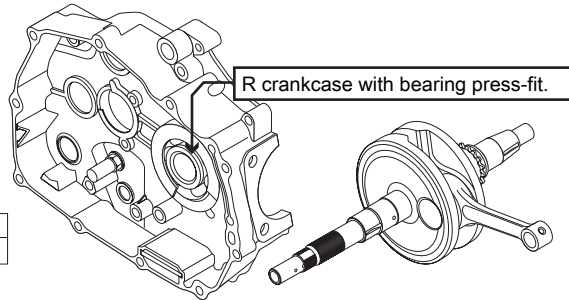
- Exclusive tool for crankshaft press-fit to crankcase.
 - CRANK SHAFT ASSEMBLY TOOL is designed and made exclusive for GROM, do not use on other models.
 - We are not responsible for violation of law or damages and accidents caused by assembling mistake and improper setting.
 - Please ask authorized mechanic for assembling and setting.
- Ask a specialist at specialty shop if you do not understand the role of the surrounding parts.
- Refer to the manufacturer service manual when installation
 - Please check and make sure each part of bolts and nuts are not loose before running.
 - Please contact a mechanic nearby immediately when you find something unusual.
- ※ Metal / resin / alumite products get discolored / rust for ages as well as how to use.

- 1) If bearing is left on the removed crankshaft, remove the bearing with exclusive tool. Press-fit & Install the bearing to R crankcase. ※ Refer to Honda service manual for the details of removing / installing bearing.

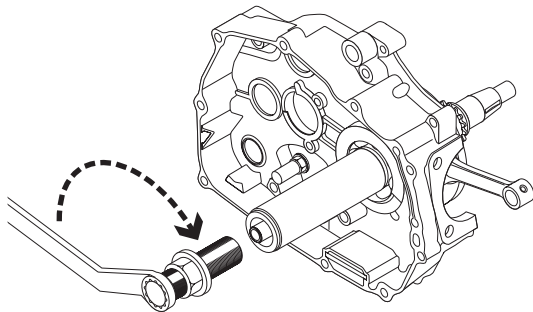
※ Still, if bearing is left on the crankshaft, use option panel (sold separately), so that it is able to press-fit with it on.

OPTION PARTS (Sold separately)

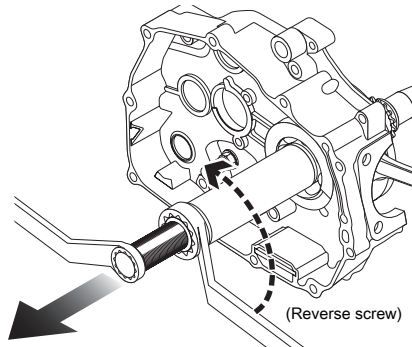
OPTION PANEL	CODE : 674-1432710
--------------	--------------------



- 2) Install the tool on crankshaft screw clockwise.



- 3) Holding screw part of exclusive tool, turn nut to pull crankshaft into R crankcase, bearing inner race.

**How to care**

Rust might occur with severe condition (like high humidity)
Apply anti-rust oil on the tool.

CRANK SHAFT ASSEMBLY TOOL

CODE : 674-1432700

APPLICATION : GROM (JC61)

ATTENTION ! EXCLUSIVE TOOL FOR REMOVING / INSTALLING BEARING IS REQUIRED

- Thank you for purchasing Kitaco product. Read and understand the instruction before installing.

ATTENTIONS (MUST READ)

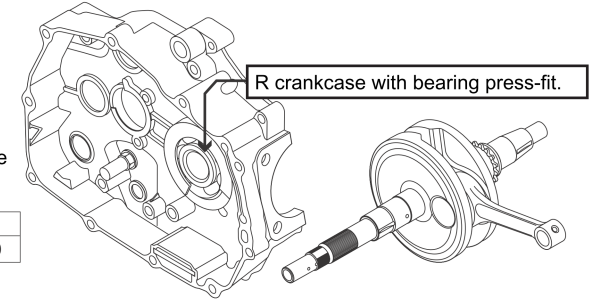
- Exclusive tool for crankshaft press-fit to crankcase.
 - CRANK SHAFT ASSEMBLY TOOL is designed and made exclusive for GROM, do not use on other models.
 - We are not responsible for violation of law or damages and accidents caused by assembling mistake and improper setting.
 - Please ask authorized mechanic for assembling and setting.
- Ask a specialist at specialty shop if you do not understand the role of the surrounding parts.
- Refer to the manufacturer service manual when installation
 - Please check and make sure each part of bolts and nuts are not loose before running.
 - Please contact a mechanic nearby immediately when you find something unusual.
- ※ Metal / resin / alumite products get discolored / rust for ages as well as how to use.

- 1) If bearing is left on the removed crankshaft, remove the bearing with exclusive tool. Press-fit & Install the bearing to R crankcase. ※ Refer to Honda service manual for the details of removing / installing bearing.

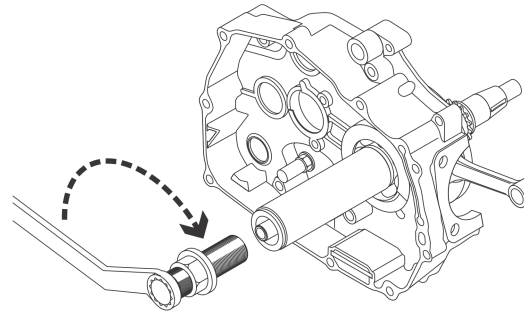
※ Still, if bearing is left on the crankshaft, use option panel (sold separately), so that it is able to press-fit with it on.

OPTION PARTS (Sold separately)

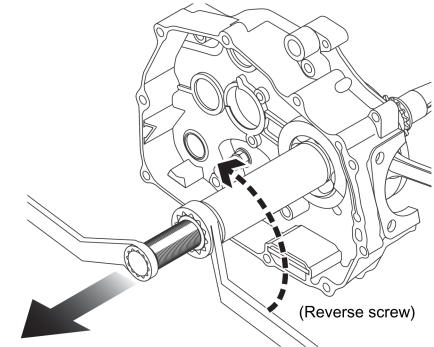
OPTION PANEL	CODE : 674-1432710
--------------	--------------------



- 2) Install the tool on crankshaft screw clockwise.



- 3) Holding screw part of exclusive tool, turn nut to pull crankshaft into R crankcase, bearing inner race.

**How to care**

Rust might occur with severe condition (like high humidity)
Apply anti-rust oil on the tool.