

<b>UNDER GUARD</b>		CODE : 632-1446000
APPLICATION	CROSS CUB 110 (JA45) ※CROSS CUB 50 (AA06) cannot use.	
REMARK	Exclusive for Kitaco exhaust (stainless sporty up/down muffler/mini cabton muffler) Unable to install with stock muffler together. (or other company's one.)	

- Thank you for purchasing Kitaco product. Read and understand the instruction before installing.

### ATTENTION (MUST READ)

- This product is for dress up. Minimize the damage from accident. (Not designed for hard use.)  
Do not use for other purposes.
- This product is designed and made exclusive for application model, do not use other models.  
Do not modify the way which is not listed or it will cause damage and trouble.
- We are not responsible for violation of law or damages and accidents caused by assembling mistake and improper setting.
- Please ask authorized mechanic for assembling and setting.
- Refer to the manufacturer service manual when installation.
- Bolts and nuts may get loosen by engine vibration. Make sure not to loosen any bolts and nuts before driving.
- This instruction sheet is for the instruction for stock condition.  
※Metal/resin/alumite products get discolored/rust for ages as well as how to use. Please understand when using.

- ⚠ Do not apply excessive force, like rope or tie down belt to deliver vehicle.  
It might cause of breaking this product and surrounding parts.
- ⊘ Cannot run up onto rock or using maintenance stand. (Unable to prevent damage from hard use.)  
It might cause of breaking this product and surrounding parts.

### PACKING LIST

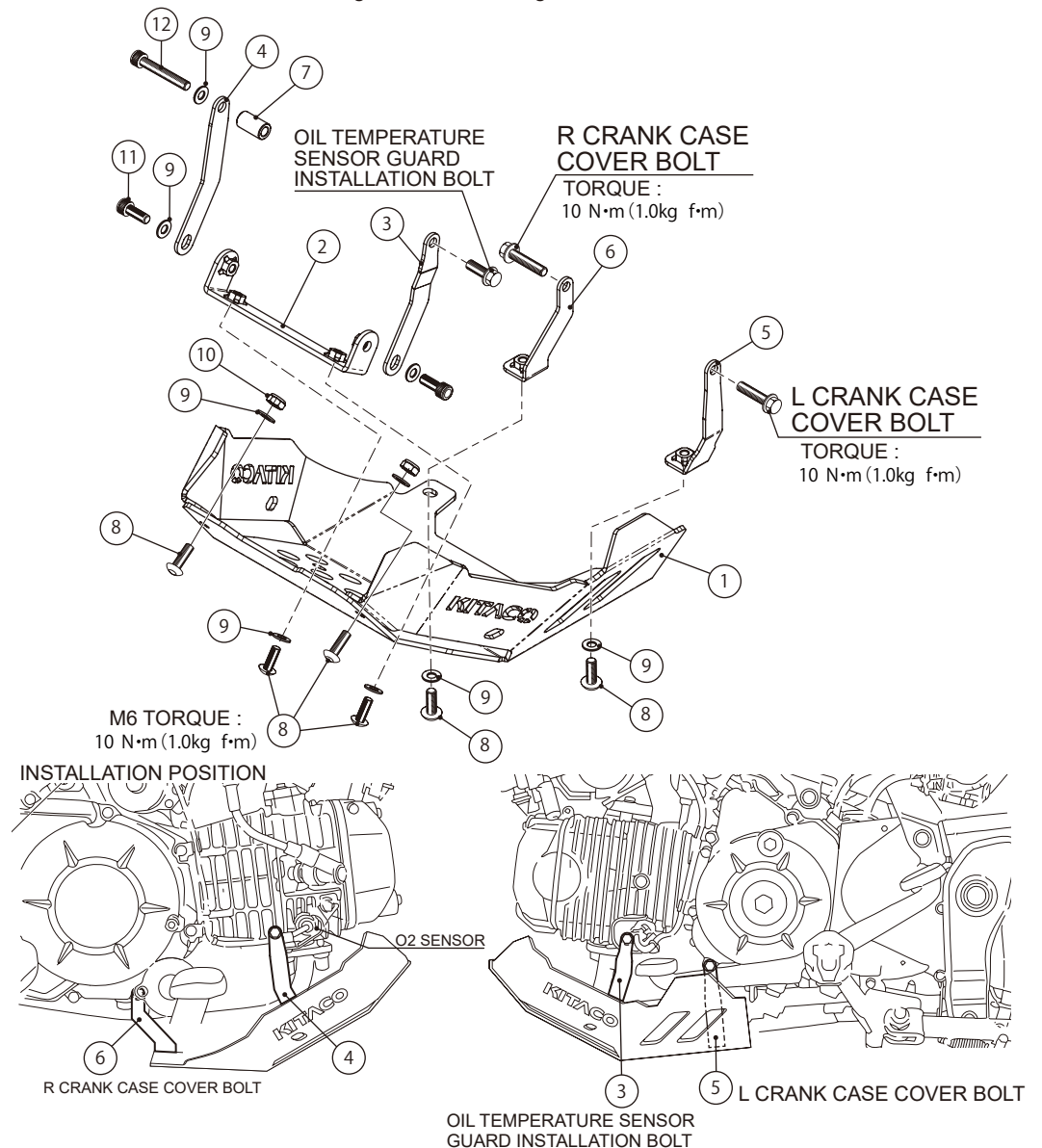
FIGURE	NAME	CODE	QTY	REMARK
1	UNDER GUARD ASSY	632-1446000A	x1	
2	CENTER STAY C (FRONT)	-	x1	
3	SIDE STAY L (FRONT)	-	x1	
4	SIDE STAY R (FRONT)	-	x1	
5	SIDE STAY L (REAR)	-	x1	
6	SIDE STAY R (REAR)	-	x1	
7	SPACER COLLAR 6.2x13xL20	093-9000042	x1	
8	BUTTON CAP BOLT M6x15	060-0550015	x6	TORQUE : 10N · m (1.0kgf · m)
9	WASHER 6x13x1.0mm	090-0900006	x9	
10	LOCK NUT 6mm	001-0540006	x2	
11	CAP BOLT M6x15	060-0500015	x2	TORQUE : 10N · m (1.0kgf · m)
12	CAP BOLT M6x40	060-0500040	x1	TORQUE : 10N · m (1.0kgf · m)

### HOW TO INSTALL

#### ADVICE!

Install bolts and nuts temporarily to adjust each parts. (If tightening firmly during temporarily installing, it might cause of installation failure.) After temporarily installation, tighten bolts and nuts firmly with specified torque.

- Make sure not to loosen under guard before riding.



190611 M-T