

ALUMINIUM KEY BOX COVER (type-2)

CODE

BLUE 556-1000210

RED 556-1000220

GOLD 556-1000270

【APPLICATION】

This product is for main key box 【HONDA GROM (retractable key is not approved)/SUPER CUB50 (AA09)/SUPER CUB110 (JA44)】

【ATTENTION!】

According to model year, model and car model, the size and shape of key is different, it might not be installable. Check the vehicle size before purchase.

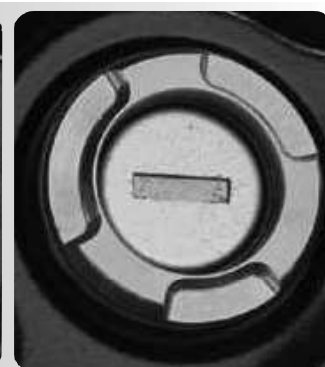
○ SIZE : $\phi 28 \times \phi 18.5 \times 3\text{mm}$

○ ALUMITE FINISH ○ Stuck with double-sided tape

Stick to key box for decorate

Correspondence with GROM / some CUB etc.,

(Be careful of this product is different from MONKEY,etc.,)



HOW TO STICK

- Clean up sticking surface of the key box.
- Stick with attached double-sized tape to key box and this product aligned with ON/OFF stamp together. Decided where to stick, stick it completely. (Stick again and again will cause of loss stickness)

ATTENTION

- According to year/car model, this product cannot be installed.
- Please refrain from using right after installation. Please wait for 1-2 hours to stick this product perfectly.
- This product is designed and made exclusive for application vehicles, other models might not be usable.

Alumite product get discolored/rust for ages as well as how to use. Please understand when using.

ATTENTION

- We are not responsible for violation of law or damages and accidents caused by assembling mistake and improper setting.