

Φ 34 BIG THROTTLE BODY KIT No.1/2

CODE	403-1300100
APPLICATION	GROM (JC75) / MONKEY125 (JB02) /NEO BORE UP 164/181cc/ DOHC 181cc specification vehicle
REMARK	※ This product is not for normal air cleaner, injector.

● Thank you for purchasing Kitaco product. Read and understand the instruction before installing.

⚠ ATTENTION

- There is a big change after installation, you need injection controller (i-Map). You need to reset if the i-Map does not have the specifically setting.(muffler, cam, displacement)
- The i-Map fuel control corresponding to big throttle body kit, it may not have best fuel control setting because of the area and individual difference. Also, it cannot correspond to all seasons, you may need to reset according to climate, environment, etc..

■ ATTENTIONS(MUST READ)

- This product is designed and made only for race use. Each rider should follow the regulations of road traffic law in your own country.
- We are not responsible for violation of law or damages and accidents caused by assembling mistake and improper setting.
- Please ask authorized mechanic for assembling and setting. Ask a specialist at specialty shop if you do not understand the role of the surrounding parts.
- Do not modify the way which is not listed or it will cause damage and trouble. This product is precision machinery, do not make a strong shock, and do not disassembly.
- Refer to the manufacturer service manual when installation.
- This product change output characteristic from normal, make sure to adjust the brake effectiveness, stability to be matched.
- Do not spark the plug out side the cylinder for spark check. It may cause of explosion.

PACKING LIST

FIGURE	NAME	CODE	QTY	FIGURE	NAME	CODE	QTY
1	THROTTLE BODY	403-1300101	x1	5	CAP BOLT M6x30	-	x2
	O RING	-	x1	6	SPACER COLLAR 6x12xt5.0mm	-	x2
2	FUNNEL (Φ 34)	514-1300100	x1	7	SEAL RING	-	x1
	HEXAGON SOCKET SET SCREW	-	x2	8	INSULATOR (28mm)	999-1432000	x1
-	MANIFOLD set (Φ 34)	410-1300100	x1	9	O RING (33,2x2,4)	967-1432000	x2
3	MANIFOLD (Φ 28/34)	410-1300101	x1	10	JUMPER HARNESS	764-9011001	x1
4	INSULATOR FOR INJECTOR	-	x1	11	SERVICE CONNECTOR 4P	764-9011002	x1

GENUINE PARTS

FIGURE	NAME	QTY	FIGURE	NAME	QTY
N1	FAST IDLE SOLENOID VALVE(2P/GRAY COUPLER)	x1	N4	INJECTOR	x1
	TORQUE SCREW(IAC VALVE INSTALL SCREW)	x2	N5	INJECTOR JOINT	x1
N2	THROTTLE OPENING SENSOR(3P/BLACK COUPLER)	x1	N6	FLANGE BOLT M6x22	x2
	TORQUE SCREW(THROTTLE SENSOR INSTALL SCREW)	x1	N7	FLANGE BOLT M6x30	x2
N3	THROTTLE CABLE BRACKET	x1	N8	THROTTLE CABLE COVER(INSTALLATION BOLT/WASHER)	x1
	BRACKET INSTALLATION SCREW	x1			

OPTIONAL PARTS

LARGE CAPACITY	x1.6	403-9000020
INJECTOR	x1.9	403-9000030
	x2.6	403-9000040

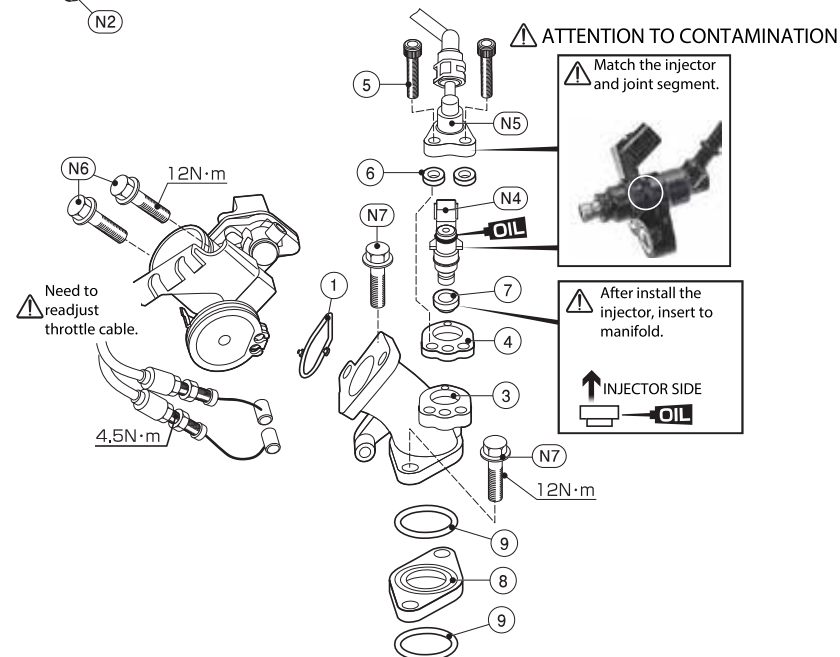
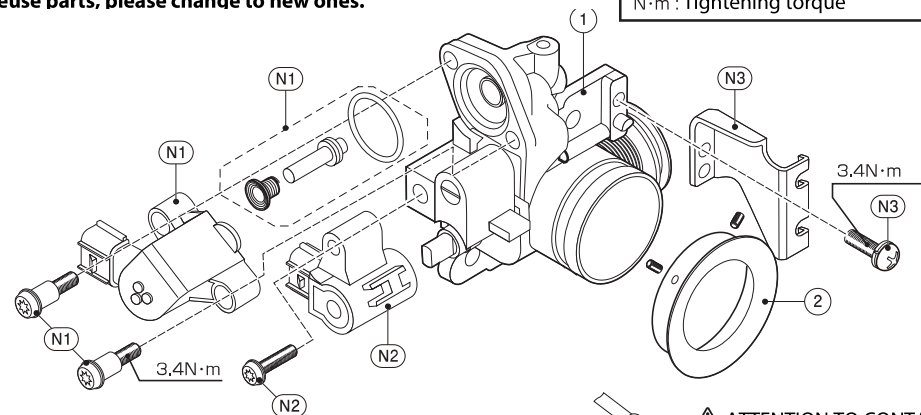
Φ34 BIG THROTTLE BODY KIT IS FOR THE MODELS WHICH HAVE FAST IDLE SOLENOID VALVE ON STOCK THROTTLE BODY.

THROTTLE BODY NET DRAWING

The drawing shows the big throttle body parts and relative genuine parts. The other parts are abbreviated.

※ If there is a hard degradation like a blem, fatigue and wear etc on the reuse parts, please change to new ones.

- (N) Reuse genuine parts.
- Apply engine oil.
- N·m : Tightening torque



⚠ ATTENTION

After assembling throttle body, each sensor, insulator and fuel injector, reset the throttle opening degree sensor. (Refer to enclosure No.2)

Φ 34 BIG THROTTLE BODY KIT No.2/2

CODE 403-1300100

HOW TO INSTALL

● REMOVE

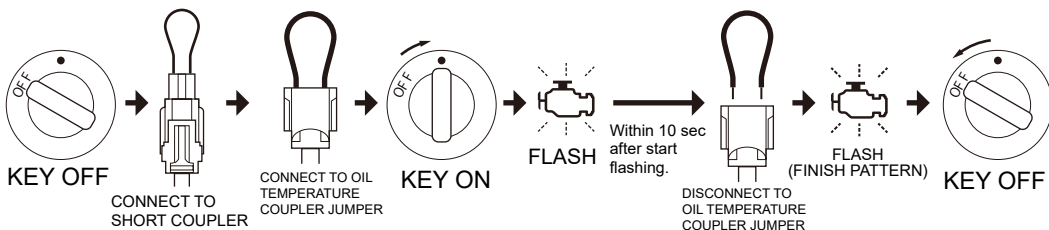
- 1 Disconnect and remove the air cleaner from throttle body.
- 2 Remove throttle cable cover (installation bolt/washer).
- 3 Remove (N3) throttle cable bracket and cable from throttle body.
- 4 Remove (N1) fast idle solenoid valve (IAC valve) (2P/gray), (N2) throttle opening degree sensor (3P/black), (N4) fuel injector (2P/black) coupler. Remove fuel evaporative gas purge hose from intake manifold. (Do not use the hose anymore, so please handle it yourself.)
- 5 Remove the (N4/N5) injector/joint 2 bolts from intake manifold, then remove injector.
- 6 Remove throttle body, intake manifold and insulator. Reuse each 2 M6 flange bolts (total 4).

● INSTALL

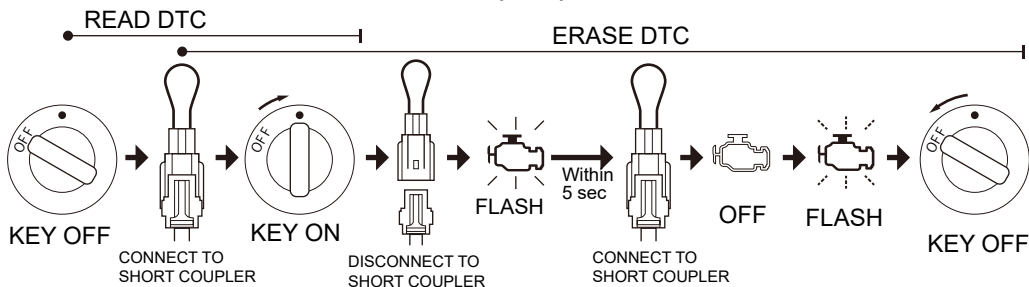
- 1 Assemble the parts below to big throttle body.
 - (N1) IAC VALVE (fast idle solenoid valve)
- 2 Make sure not to break the valve seat, spring and o ring, then install with genuine torque screw.
 - (N2) THROTTLE OPENING DEGREE SENSOR (reuse genuine torque screw)
 - (N3) THROTTLE CABLE BRACKET (reuse genuine screw)
- 2 Install the parts below to attached (3) intake manifold, then install to cylinder head.
 - (2) FUNNEL (fixed with attached hexagon socket set screw)
 - (8/9) INSULATOR / O RING
 - (N4/5) INJECTOR / JOINT, (4) INSULATOR / (6) SPACER COLOUR / (7) SEALING

[Refer to the throttle body net drawing
- 3 Install the throttle body and intake manifold with genuine flange bolt.
- 4 (N3) Connect the cable to throttle cable bracket.
- 5 Connect (N1) IAC valve (2P / gray), (N2) throttle opening degree sensor (3P / black), (N4) fuel injector (2P / black) coupler.
- 6 Reset the throttle opening degree sensor
[Refer to the reset / reading / delete process]

HOW TO RESET THROTTLE OPENING SENSOR



CHECK/DELETE DIAGNOSTIC CODE (DTC)



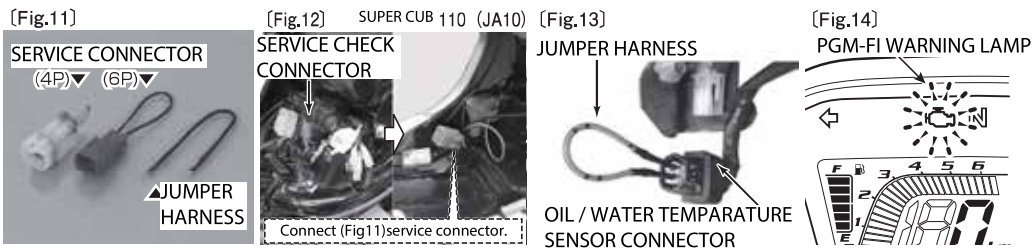
▼ RESET THE THROTTLE OPENING DEGREE SENSOR

After throttle body installation, please do the sensor reset below.

- ※ According to models, there are difference where to use the jumper harness, please refer to the service manual.
- ※ Please do this work with no DTC saved in ECM. If DTC is saved, it is unable to reset. Please delete the DTC. (For more detail, refer to the saved DTC READING and DELETE THE SAVED DTC.)

*DTC=Diagnostic Trouble Codes
*DLC = Data Link Connector

- 1 Turn main switch "OFF".
 - 2 After checking the service check coupler position by referring to service manual, remove the dummy coupler from service check 4P or 6P (red) coupler. Then connect the attached service connector to service check 4P or 6P (red) coupler. [Fig.15 is GROM / Fig.16 is MONKEY125 / Fig.11/12 is SUPER CUB110(JA10)]
 - 3 Remove oil/water temperature sensor connector, then connect the attached jumper harness. [Fig.13]
 - 4 Turn main switch "ON".
 - 5 PGM-FI warning lamp [Fig.14] start blinking with 「Reset receive pattern」 (1.2 seconds interval), remove the 「jumper harness」 from oil/water temperature connector coupler within 10 seconds.
 - 6 PGM-FI warning lamp is changed to 「Reset finished pattern」 (0.3 seconds interval), the reset is finished.
- ※ If more than 10 seconds passed, or the process is incorrect, the PGM-FI lamp stays lit. [Reset failed.] Please do the work again from process 1.
- 7 Turn main switch to "OFF".
 - 8 Connect oil / water temperature connector, then remove service connector from service check connector.

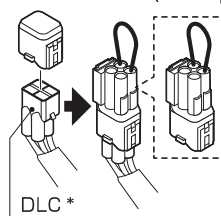


▼ READING AND DELETE THE SAVED DTC.

Please refer to the service manual.

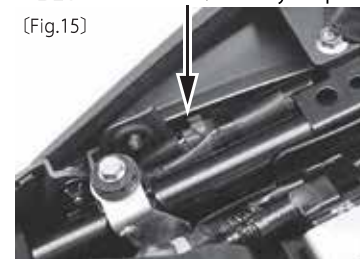
DTC READING

*DLC = Data Link Connector
Service connector (4P coupler)



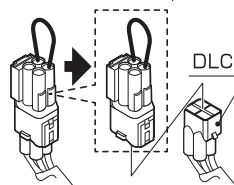
- Turn main switch OFF.
- Remove dummy coupler from DLC.
- Short circle the DLC terminal by using service connector.
- Turn main switch ON.
- Read MIL (PGM-FI warning lamp) blinking, refer to the diagnosis for failure.
- If the past failure is saved to ECM memory. MIL is lit 0.3 seconds, then start DTC blinking.

GROM (JC75) Near the right side seat rail.
DLC Service check / dummy coupler



DELETE THE SAVED DTC

*DLC = Data Link Connector
SERVICE CONNECTOR(4P COUPLER)



- Connect the service connector to DLC.
- Turn main switch ON.
- Remove service coupler from DLC.
- Reconnect the service connector to DLC while MIL (PGM-FI warning lamp) is being lit to 5 seconds. (Reset receive pattern)
- If MIL is off then start blinking, the DTC is delete. (Success)
- While MIL is being lit, it is need to reconnect the service connector. Otherwise, MIL does not start blinking. In this case, turn main switch off, then do this work again.
- Be careful not to turn main switch "OFF" before MIL starts blinking. Otherwise DTC is not deleted.

MONKEY 125 (JB 02) Near left side cover.
DLC Service check / dummy coupler

