

SUPER OIL COOLER KIT (3 ROW)

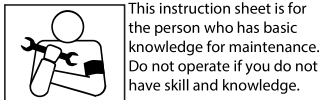
No, 1 / 2

CODE	360-1470100EX
APPLICATION	CT125 HUNTER CUB (JA55)
REMARK	Take out port is kitaco cylinder for 164/181cc. ※You cannot use normal, kitaco cylinder for 133cc.

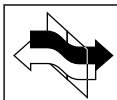
● Thank you for purchasing Kitaco product. Read and understand the instruction before installing.

ATTENTIONS (MUST READ)

- SUPER OIL COOLER KIT is for racing use only. Use this product with your responsibility.
- This product is to cool engine oil to avoid heating troubles to cause performance decrement.
- We are not responsible for damages and accidents caused by assembling mistake and improper setting.
- Do not modify the way which is not listed or it will cause damage and trouble.
- Please ask authorized mechanic for assembling and setting. Ask a specialist at specialty shop if you do not understand the role of the surrounding parts.
- Refer to the manufacturer HONDA service manual when installation.
- Bolts and nuts may get loosen by engine vibration.
- SUPER OIL COOLER KIT is designed and made exclusive for CT125 HUNTER CUB(JA55), do not use on other models.
- Metal / resin / alumite products get discolored / rust for ages as well as how to use. Please understand when using.



This instruction sheet is for the person who has basic knowledge for maintenance. Do not operate if you do not have skill and knowledge.



Toxic, highly-volatile gasoline is used during operation. Be sure to ventilate the room. Do not operate for hours in a hermetically closed room.



FLAMMABLES
Inflammable high oil is used during operation. The use of products causing fire or smoke is strictly prohibited.



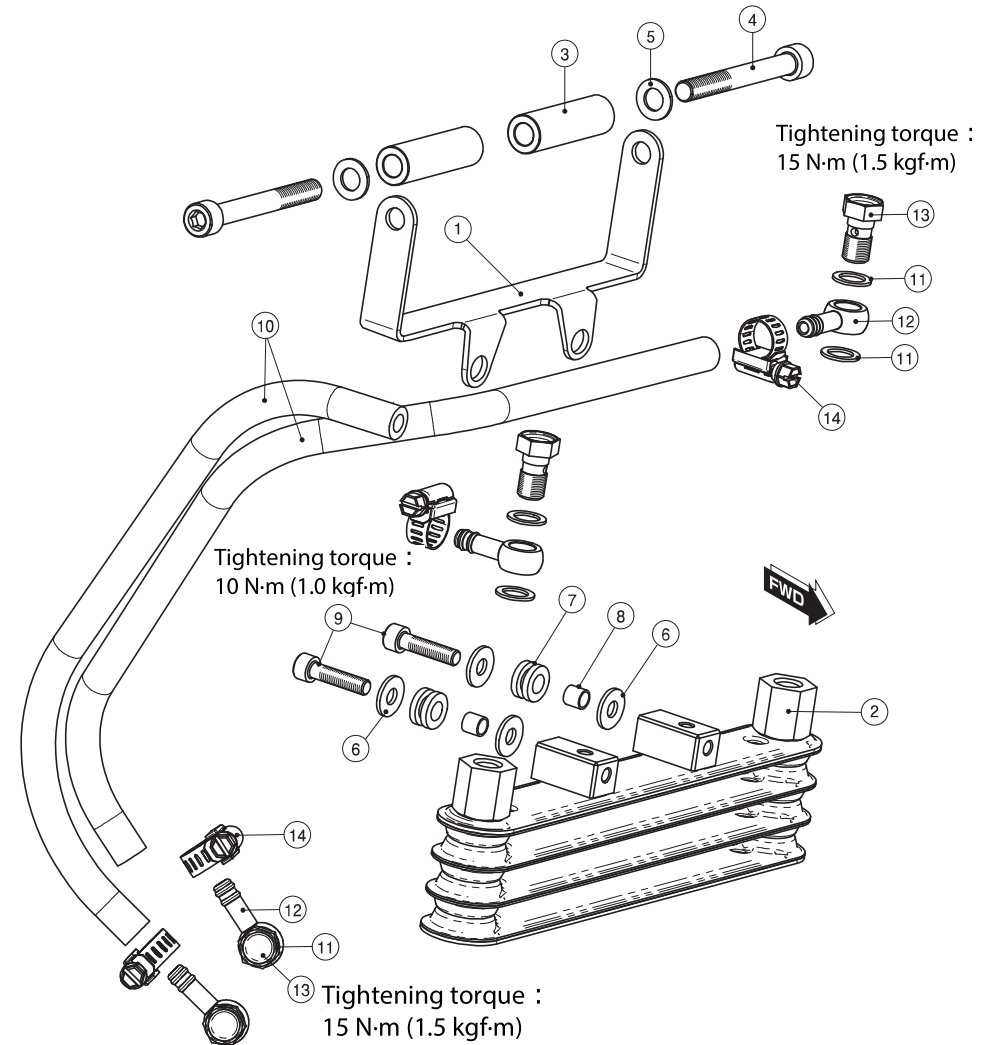
Do not touch the parts(cylinder, crankcase, muffler etc...) right after engine operation. Make sure to start the installation after the engine part are completely cool.



Do not check the sparking of spark plug outside of the cylinder. There are dangerousness of explosion.

PACKING LIST (Refer to the figures & illustration right side)				
FIGURE	NAME		CODE	QTY
1	OIL COOLER STAY	CT125	360-1470101	x1
2	OIL COOLER	(3 ROWCONDENSER)	360-0500100	x1
3	COLLAR	8.5x15x50	539-1470203	x2
4	CAP BOLT	M8x70	080-0500070	x2
5	FLAT WASHER	8x16x1.2mm	090-0900008	x2
6	FLAT WASHER	6.5x16x1.6mm	090-0907006	x4
7	GROMMET	7.5x9x14x7T	752-9999099	x2
8	GROMMET COLLAR	6.2x7.5xL7	093-0900003	x2
9	CAP BOLT	M6x25	060-0500025	x2
10	OIL HOSE	1000mm	991-0000100	x1
11	ALUMINIUM SEALING WASHER	10mm	771-0500999	x8
12	UNION NIPPLE (BLACK)	M10/6mm HOSE	990-0900901	x4
13	ALUMINIUM BANJO BOLT (RED)	M10xP1.25	771-0900900	x2
14	HOSE BAND	Φ 8 ~ 12	995-0500012	x4
-	MS TIE (BLACK)	152x3.5	700-9200152	x4

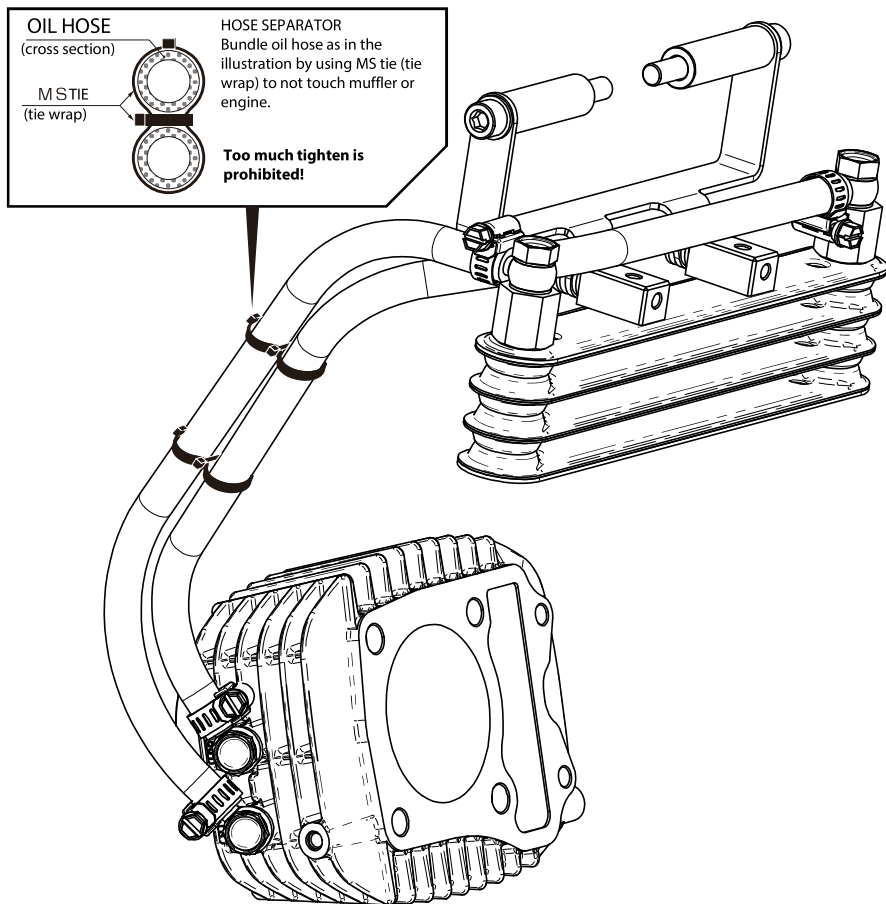
※ Basically, reuse genuine parts if it is not attached. If there is a hard degradation like scratch, settling, friction, etc... on the reuse parts, please change to new one.
 ※ Please check attached document NO,2 that how to install.



SUPER OIL COOLER KIT [3 ROW] No.2/2

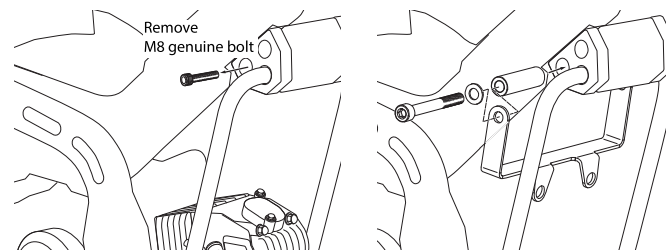
CODE	360-1470100EX
APPLICATION	CT125 HUNTER CUB (JA55)
REMARK	Take out port is kitaco cylinder for 164/181cc. ※You cannot use normal, kitaco cylinder for 133cc.

OIL CATCH TANK HOSE LAYOUT

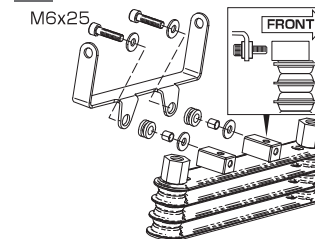


INSTALLING OIL COOLER

1 Install stay for condenser to illustration spot by using attached bolt and collar.
Tightening torque : 10 N·m (1.0 kgf·m)



2 Refer to illustration, install the condenser, and route oil cooler hose.
Tightening torque : 10 N·m (1.0 kgf·m)

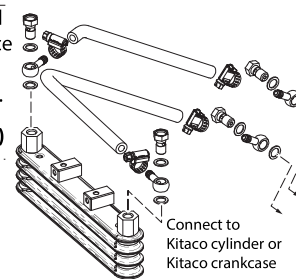


3 Decide the mounting position, cut the oil hose moderately and connect to the place for taking out oil. Make sure that the oil hose is not touched by muffler or engine.

Tightening torque : 15 N·m (1.5 kgf·m)

⚠ Add engine oil (**standard amount + 75~100cc**) for oil cooler capacity.

※ We recommend to bundle hoses by using attached tie wrap or hose separator to not touch.



(Optional parts) HOSE SEPARATOR

RED	993-9000020
BLACK	993-9000050
SILVER	993-9000060

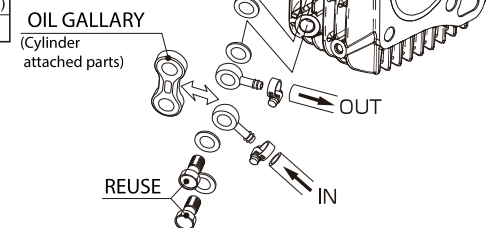
About Kitaco cylinder / clutch cover's oil line(take out)

- Remove oil gallery from oil line and exchange to attached oil nipple, aluminum washer.
- Please tighten bolts and nuts following the description.
- ※ If there is a hard degradation like scratch, settling, friction, etc... on the reuse parts, please change to new one.

TIGHTENING TORQUE		
NAME	QTY	N·m(kgf·m)
UNION BOLT (REUSE)	2	15 (1.5)

KITACO CYLINDER

※ The arrow in the illustration is oil cooler line.



ATTENTION!

※ Do not start engine quickly. Keep idling before oil goes all inside the cylinder head lubrication.