

SHROUD STAY SET No.1 /1

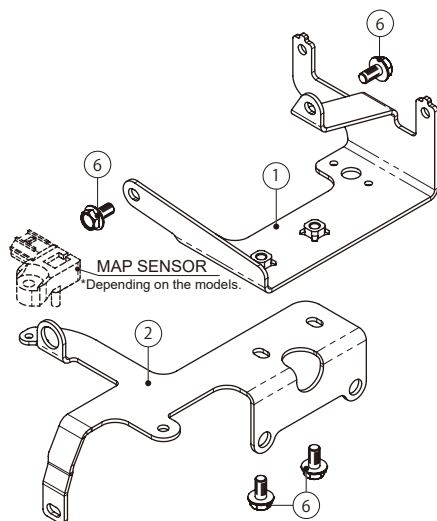
CODE	360-1452500	
APPLICATION	GROM (JC92)	
REMARK	Removing stock air cleaner is required. Please use filter kit as air cleaner, etc instead. Recommend to deal with breather filter, etc for blowby gas crank case breather hose.	

●Thank you for purchasing Kitaco product. Read and understand the instruction before installing.

ATTENTION (MUST READ)

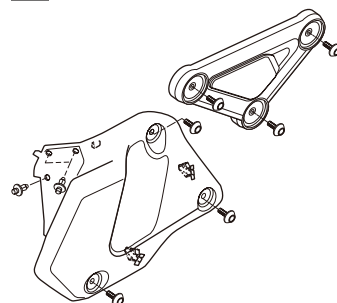
- This product is designed and made exclusive for application models, do not use other models. Do not modify the way which is not listed or it will cause damage and trouble.
 - We are not responsible for violation of law or damages and accidents caused by assembling mistake and improper setting.
 - Do not modify the way which is not listed or it will cause damage and trouble.
 - Please ask authorized mechanic for assembling and setting. Ask a specialist at specialty shop if you do not understand the role of the surrounding parts.
 - Refer to the manufacturer service manual when installation.
 - Bolts and nuts may get loosen by engine vibration. Make sure not to loosen any bolts and nuts before driving.
 - This product is designed and made exclusive for application models, do not use other models.
- ※Metal/resin/alumite products get discolored/rust for ages as well as how to use. Please understand when using.

PACKING LIST			
FIGURE	NAME	CODE	QTY
1	SHROUD STAY A	360-1452002	x1
2	SHROUD STAY B CONDENSER STAY	360-1452003	x1
6	FLANGE HEXAGON BOLT M6x12	062-0561012	x4

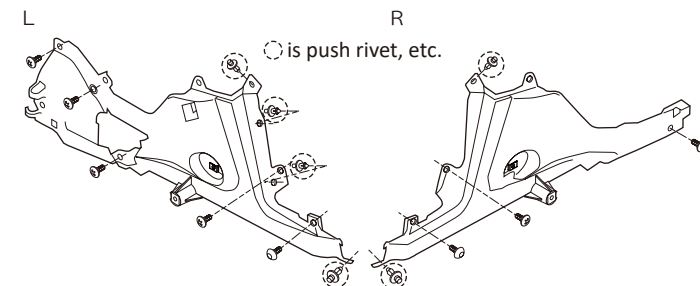


REMOVING / INSTALLING OUTER COWLS

1-1 Remove L / R both side shroud and side cover A.



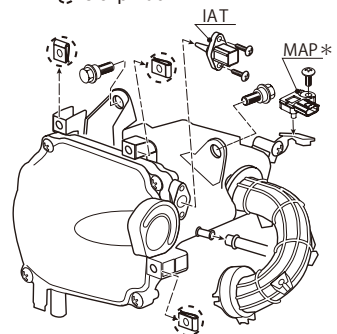
1-2 Remove L / R both side fuel tank cover.



1-3 Remove air cleaner.

※ Reuse intake air temperature (IAT) / intake pressure (MAP) sensor and clip. (*There might no MAP depending on the models.)

○ is clip nut.



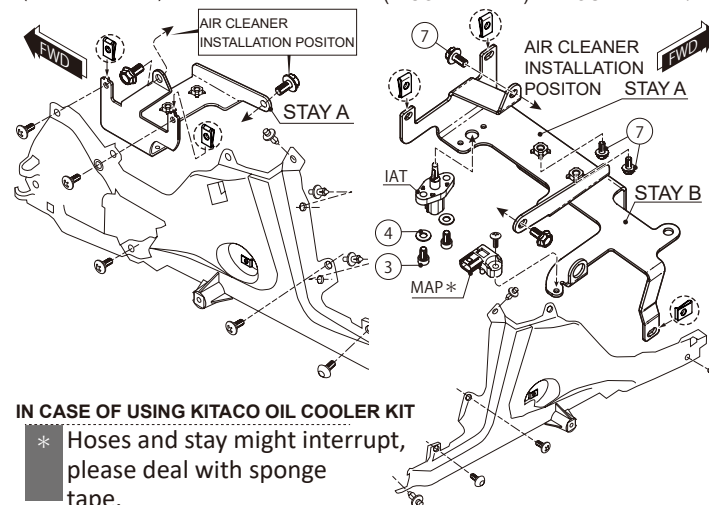
※ Recommend to deal with breather filter, etc for blowby gas crank case breather hose.

INSTALLING SHROUD / CONDENSOR STAY

2-1 Install shroud stay A / B (condensor stay) to L / R both side and vehicle with ⑥ bolt M6x12.

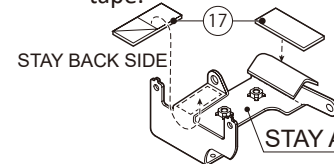
※ Install the removed intake air temperature (IAT) / intake pressure (MAP) sensor and clip nut removed from air cleaner to specified position. (*There might no MAP depending on the models.)

(L COVER SIDE) SHROUD STAY A (R COVER SIDE) SHROUD STAY A / B



IN CASE OF USING KITACO OIL COOLER KIT

※ Hoses and stay might interrupt, please deal with sponge tape.



※⑰Sponge tape is attached to Kitaco oil cooler kit (frame mounting type).

230907 M-T



3-8-13 NAGATA,
HIGASHI-OSAKA,
OSAKA, JAPAN
<https://www.kitaco.co.jp/>