

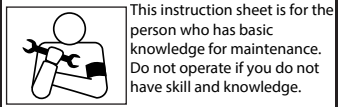
SUPER OIL COOLER KIT (3/5 ROW) UP type No.1/2

CODE	(3 ROW) 360-1452160	(5 ROW) 360-1452260
APPLICATION	GROM (JC92)	
REMARK	When installing, it remove the genuine air cleaner. Therefore you need separate filter KIT like air cleaner, etc... We recommend to use breather filter to deal with blowby gas's crankcase breather hose.	

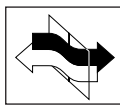
● Thank you for purchasing Kitaco product. Read and understand the instruction before installing.

ATTENTIONS (MUST READ)

SUPER OIL COOLER KIT is for racing use only. Use this product with your responsibility.
 This product is to cool engine oil to avoid heating troubles to cause performance decrement.
 We are not responsible for damages and accidents caused by assembling mistake and improper setting.
 Do not modify the way which is not listed or it will cause damage and trouble.
 Please ask authorized mechanic for assembling and setting.
 Ask a specialist at specialty shop if you do not understand the role of the surrounding parts.
 Refer to the manufacturer HONDA service manual when installation.
 Bolts and nuts may get loosen by engine vibration.
 SUPER OIL COOLER KIT is designed and made exclusive for GROM(JC92), do not use on other models.
 Metal / resin / alumite products get discolored / rust for ages as well as how to use. Please understand when using.



This instruction sheet is for the person who has basic knowledge for maintenance. Do not operate if you do not have skill and knowledge.



Toxic, highly-volatile gasoline is used during operation. Be sure to ventilate the room. Do not operate for hours in a hermetically closed room.



FLAMMABLES
 Inflammable high oil is used during operation. The use of products causing fire or smoke is strictly prohibited.

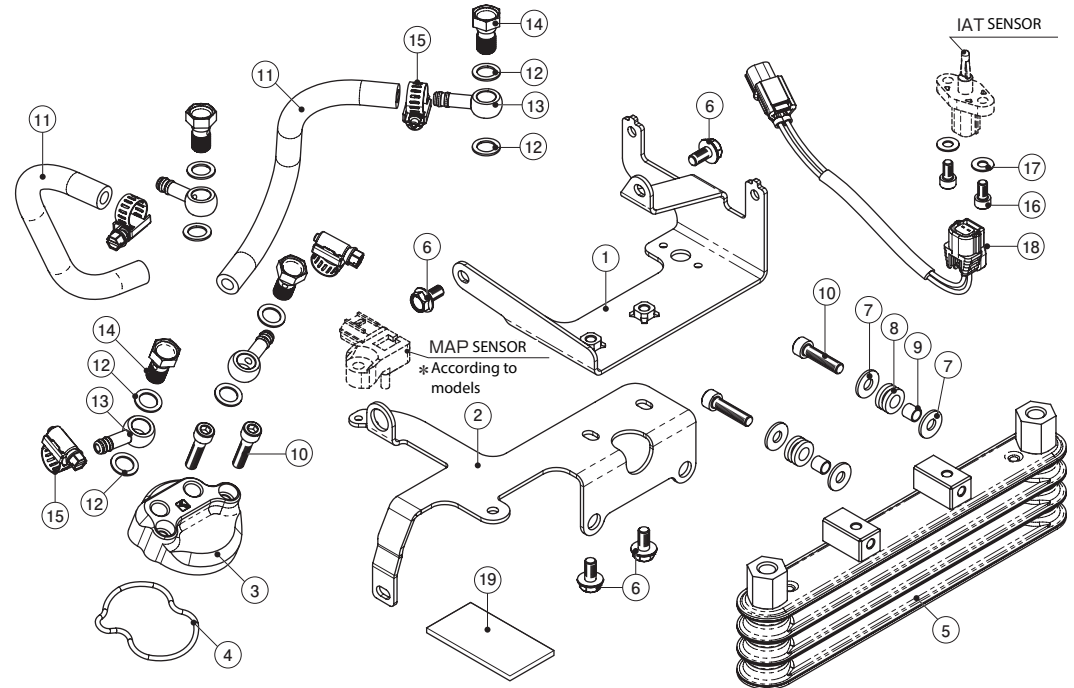


Do not touch the parts(cylinder, crankcase, muffler etc...) right after engine operation. Make sure to start the installation after the engine part are completely cool.



Do not check the sparking of spark plug outside of the cylinder. There are dangerousness of explosion.

PACKING LIST (Refer to the figures & illustration below side)				3MC	5MC
FIGURE	NAME	CODE	QTY		
1	SHROUD STAY A	360-1452002	x1	x1	
2	SHROUD STAY B	CONDENSER STAY	x1	x1	
3	TAPPET HOLE COVER	SILVER	x1	x1	
4	GASKET	TAPPET HOLE COVER	x1	x1	
5	OIL COOLER	(3 ROW CONDENSER)	x1	-	
		(5 ROW CONDENSER)	-	x1	
6	FLANGE HEXAGON BOLT	M6x12	x4	x4	
7	FLAT WASHER	6.5x16x1.6mm	x4	x4	
8	GROMMET	7.5x9x14x7T	x2	x2	
9	GROMMET COLLAR	6.2x7.5xL7	x2	x2	
10	CAP BOLT	M6x25	x4	x4	
11	OIL HOSE	1000mm	x1	x1	
12	ALUMINIUM SEALING WASHER	10mm	x8	x8	
13	UNION NIPPLE (BLACK)	M10/6mm HOSE	x4	x4	
14	ALUMINIUM BANJO BOLT (RED)	M10xP1.25	x4	x4	
15	HOSE BAND	Φ 8 ~ 12	x4	x4	
16	CAP BOLT	M5x10	x2	x2	
17	FLAT WASHER	5x12x1.0mm	x2	x2	
18	IAT EXTENSION HARNESS FOR INTAKE AIR SENSOR	360-1300195	x1	x1	
19	ANTI-VIBRATION TAPE (SPONGE)	20x58x3 mm	x1	x1	

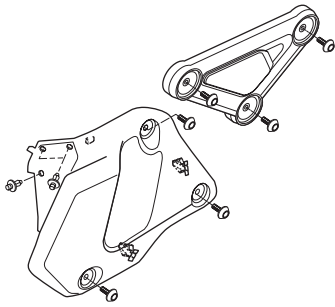


SUPER OIL COOLER KIT [3/5 ROW] UP type No,2/2

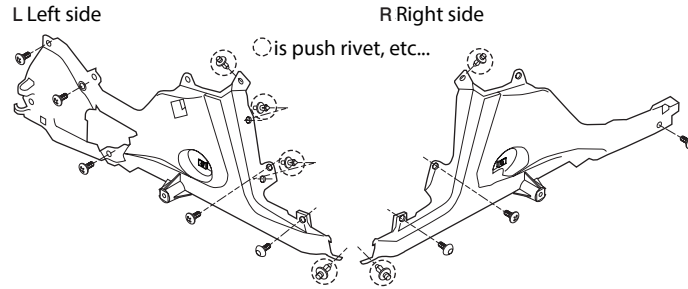
CODE	(3ROW) 360-1452160	(5ROW) 360-1452260
APPLICATION	GROM (JC92)	
REMARK	When installing, it remove the genuine air cleaner. Therefore you need separate filter KIT like air cleaner, etc... We recommend to use breather filter to deal with blowby gas's crankcase breather hose.	

DISASSEMBLING / INSTALLING OF EXTERIORS

1-1 Remove the shroud and side cover on both L/R sides.

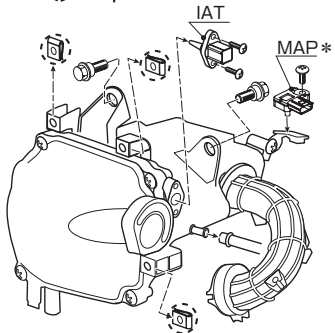


1-2 Remove the fuel tank cover on both L/R sides.



1-3 Remove the air cleaner.

※ Reuse the intake air temperature (IAT) / intake pressure (MAP) sensor and part of clip nut.
(MAP may not exist depending on the vehicle type)
○ is clip nut

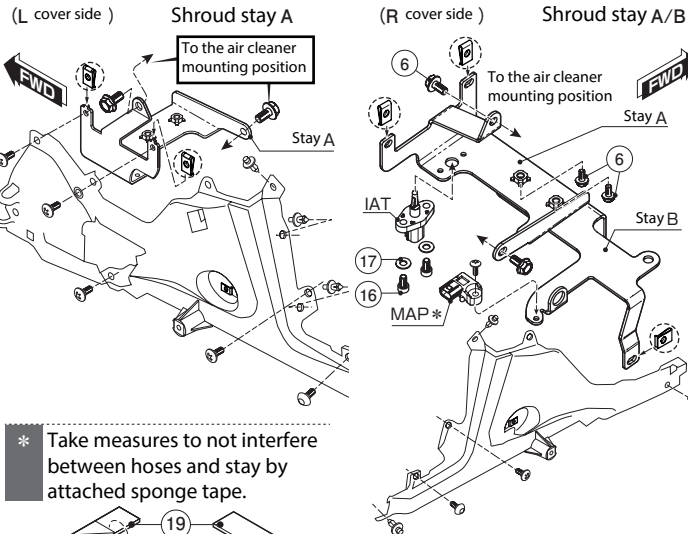


※ We recommend to use breather filter (sold separately) to deal with blowby gas's crankcase breather hose.

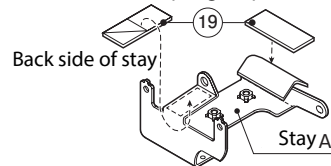
INSTALLING THE SHROUD / CONDENSER STAY

2-1 Install shroud stay A/B (condenser stay) to both L/R side and vehicle by using bolt M6x12.

※ Install intake air temperature (IAT) / intake pressure (MAP) sensor, clip nut that are removed from air cleaner, to the right place. (MAP may not exist depending on the vehicle type)



※ Take measures to not interfere between hoses and stay by attached sponge tape.



INSTALLING OIL COOLER

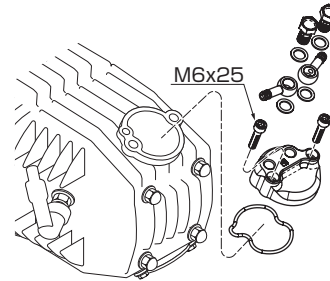
3-1 Exchange intake side genuine valve adjust cap to kitaco one.

Tightening torque : 10 N·m (1.0 kgf·m)

Install attached union nipple / bolt, aluminum washer temporarily.

※ If there is a hard degradation like scratch, settling, friction, etc... on the reuse parts, please change to new one.

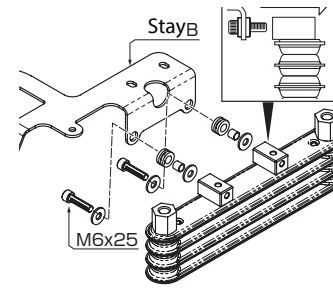
※ Tighten bolts & nuts with specified torque.



3-2 Refer to illustration, install the condenser, and route oil cooler hose.

Tightening torque

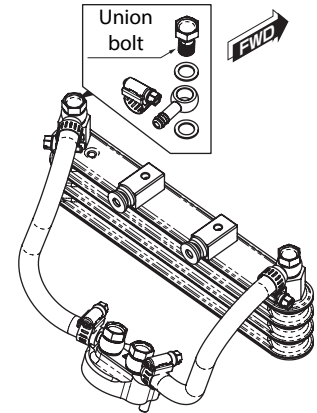
: 10 N·m (1.0 kgf·m)



3-3 Decide the mounting position, cut the oil hose moderately and connect to the place for taking out oil. Make sure that the oil hose is not touched by muffler or engine.

Banjo bolt tightening torque
: 15 N·m (1.5 kgf·m)

⚠ Add engine oil (standard amount + 75~100cc) for oil cooler capacity.



ATTENTION!

※ Do not start engine quickly. Keep idling before oil goes all inside the cylinder head lubrication.