



## SUPER/ULTRA OIL PUMP KIT for MONKEY

APPLICATION A+B MONKEY/GORILLA FNO,Z50J-1300017 ~ 1805927 MONKEY/GORILLA FNO,Z50J-1600008 ~ 1805927 DAX 50 FNO,ST50-1000001 ~ 6346265 DAX 70 FNO,ST70-1000001 ~ 6346265 CHALY 50 FNO,CF50-1000002 ~ 2899999 CHALY 70 FNO,CF70-2000003 ~ 2999999 CD50 FNO,CD50-1100001 ~ 1330600 ATC70 FNO,TB030-CC706548 ~ CC718216 ATC70 FNO,TB03-1100001 ~ 1501200 TRX70 FNO,TE10-1000001 ~	APPLICATION C MONKEY/GORILLA FNO,Z50J-2000001 ~ /AB27-1000001 ~ MONKEY BAJA MONKEY R/RT DAX 50 JAZZ MAGNA 50 FNO,AC13-1000010 ~ CD50/ BENLY 50S /CL50 FNO,CD50-1500001 ~ ※CHALY 50 (See below) FNO,CF50-3000031 ~ ※CHALY 70 (See below) FNO,CF70-3000029 ~ SUPER CUB/LITTLE CUB FNO,C50-8000001 ~ /AA01-1000001 ~
---	--

<b>Spindle SET, etc. may be required depending on vehicle specifications, referring to the following.</b>	
SUPER OIL PUMP KIT (6V) CODE : 331-1013300 APPLICATION A+B DISCHARGE VOLUME 2750cc/4000rpm Can be installed as is, but if a stroke up crank is installed, a spindle set and driveshaft are required.	
ULTRA OIL PUMP KIT (6V) CODE : 331-1013400 APPLICATION A+B DISCHARGE VOLUME 3400cc/4000rpm Spindle SET is required for installation on vehicles with stock oil pump spindles.	
ULTRA OIL PUMP SET (6V) CODE : 331-1013500 APPLICATION A+B DISCHARGE VOLUME 3400cc/4000rpm A spindle SET is included for installation. (For stock displacement and our 85/88cc bore up KIT)	
SUPER OIL PUMP KIT (12V) CODE : 331-1083000 APPLICATION C DISCHARGE VOLUME 2750cc/4000rpm It can be installed as is regardless of displacement or specifications. ※CHALY 50 (FNO,CF50-3000031~) • CHALY 70 (FNO,CF70-3000029~) CANNOT BE FITTED	
ULTRA OIL PUMP KIT (12V) CODE : 331-1083400 APPLICATION C DISCHARGE VOLUME 3400cc/4000rpm It can be installed regardless of displacement or specifications.(Some stock parts are used when chaly 50 • 70 are installed)	

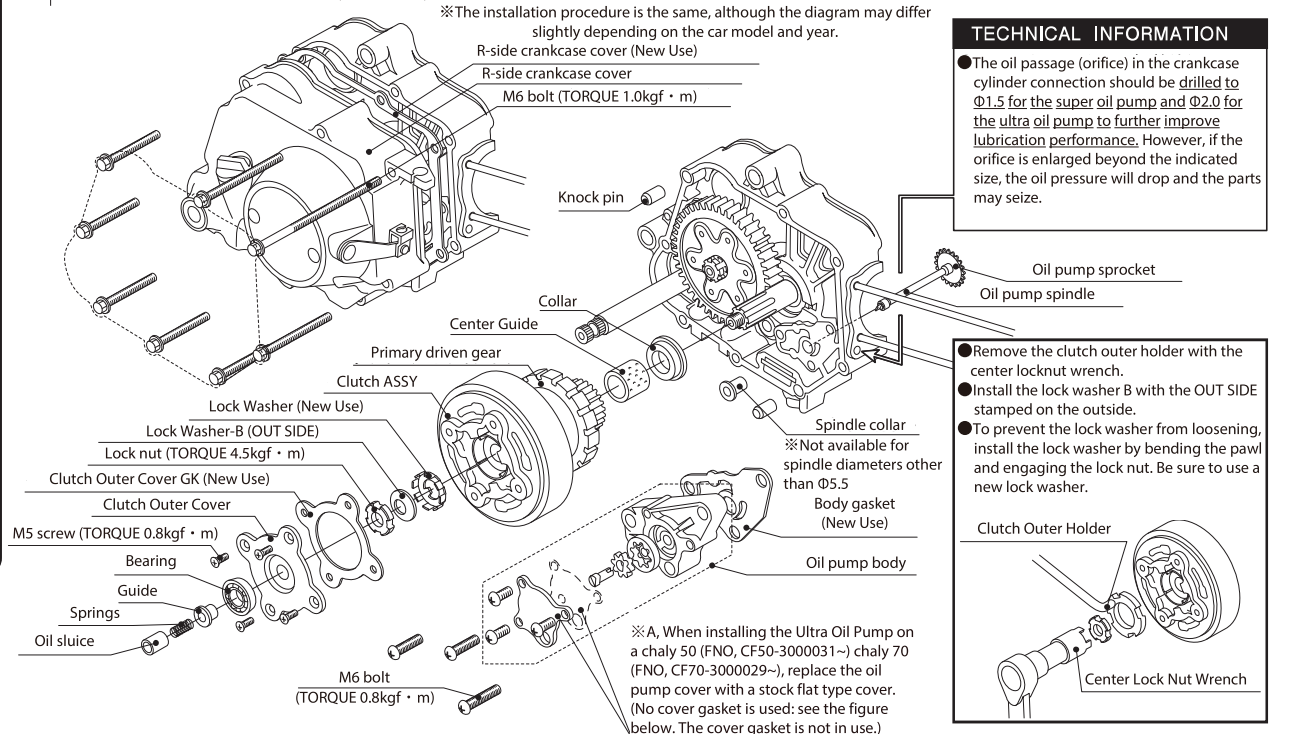
### ATTENTION (MUST READ)

- This product is for racing use only. Please use this product with the understanding that no claims or complaints will be accepted.
- This product is designed to compensate for insufficient lubrication during engine tuning (especially when increasing displacement) to prevent seizure and overheating.
- Follow this instruction sheet. Do not modify the way which is not listed or it will cause damage and trouble.
- Please ask authorized mechanic for assembling and setting.
- Refer to the manufacturer service manual when installation.
- Bolts and nuts may get loosen by engine vibration.
- This product is designed and made exclusive for application models, do not use other models.

<b>FLAMMABLES</b> Inflammable high oil is used during operation. Using products causing fire or smoke is strictly prohibited.	Engine oil is very hot during and after engine operation, so start work when the engine oil is cool enough (oil is hot even if the surface is cool).	Cylinders, crankcases, mufflers, etc. are very hot during and after engine operation and should not be touched carelessly.	This instruction sheet is for the person who has basic knowledge for maintenance. Do not operate if you do not have skill and knowledge.

- Thank you for purchasing Kitaco product. Read and understand the instruction before installing.
- Special tools and packing SET are required for installation.
- Mounting Instructions

- 1 Remove the drain bolt at the bottom of the engine and drain the engine oil. After draining, be sure to tighten the drain bolt.
- 2 The R-crankcase cover will be removed, and the accompanying kick pedal, clutch wire, step, etc. will be removed. In addition, if the oil pump spindle is to be replaced, the crankcase will be disassembled, so remove the engine from the body.
  - ※ Parts to be removed vary depending on the model and year of the car, so be sure to refer to the manufacturer's service manual for each car model before attaching and detaching.
- 3 Remove the 8 M6 bolts from the right side of the crankcase, and remove the R-side crankcase cover, right side crankcase cover gasket, and 2 knock pins.
  - ※ If it is difficult to remove, lightly tap around the connection surface with a plastic hammer or the like to facilitate removal.
  - ※ If the gasket is adhered to the crankcase connection surface, remove it with a scraper, etc., being careful not to scratch the connection surface.
- 4 (For manual clutch cars) Remove the oil through, spring, guide, and bearing from the clutch assembly, remove the total of four M5 screws from the clutch outer cover, and remove the clutch outer cover gasket. (For automatic centrifugal clutch cars) Remove the clutch lifter lever from the gear spindle, the lifter ball retainer, oil through, oil through spring, lifter cam, and bearing from the clutch assembly, and remove the 4 M5 screws total from the clutch outer cover, Remove the clutch outer cover gasket.
  - ※ If the gasket is adhered to the clutch outer cover connection surface, remove it with a scraper, etc., being careful not to scratch the connection surface.
- 5 While holding the clutch assembly in place with the special tool clutch outer holder, remove the lock nut with the special tool clutch center lock nut wrench, and then remove the clutch assembly and primary drive gear.
- 6 Remove the three M6 bolts, remove the stock oil pump and oil pump body gasket, and replace them with the supplied new body gasket and our oil pump.
  - ※ A When installing the Ultra Oil Pump on a chaly 50 (FNO, CF50-3000031~) chaly 70 (FNO, CF70-3000029~), replace the oil pump cover with a stock flat type cover. (No cover gasket is used: see the figure below. The cover gasket is not included in our oil pump KIT)
  - ※ Mounting installation, make sure that the oil pump drive shaft and oil pump spindle are engaged.
  - ※ Please note that spindle collars cannot be used for vehicles with an oil pump spindle diameter other than  $\phi 5.5$ .
- 7 Finish the work by putting back all the removed parts. When replacing the spindle, please refer to the manufacturer's service manual or the installation manual for your bore up KIT.
  - ※ Be sure to use new clutch outer cover gasket and right side crankcase cover gasket when assembling.
  - ※ Be sure to apply a thin layer of liquid gasket (TB1207B, specified by Kitaco) to prevent the clutch outer cover from blowing out due to increased oil pressure. If there are scratches or dents on the connecting surface between the clutch outer and outer cover, please polish it flat.
  - Clutch outer cover gasket 966-1015006 ● R-crankcase cover gasket 966-1015004
- 8 Fill the engine with the specified amount of engine oil, and without starting the engine, rotate the crankshaft with a kick and carefully check for oil leaks and oil pressure increase. If the oil pressure does not increase, check for any abnormality in the installation.
  - ※ The installation procedure is the same, although the diagram may differ slightly depending on the car model and year.



**TECHNICAL INFORMATION**

- The oil passage (orifice) in the crankcase cylinder connection should be drilled to  $\phi 1.5$  for the super oil pump and  $\phi 2.0$  for the ultra oil pump to further improve lubrication performance. However, if the orifice is enlarged beyond the indicated size, the oil pressure will drop and the parts may seize.

- Remove the clutch outer holder with the center locknut wrench.
- Install the lock washer B with the OUT SIDE stamped on the outside.
- To prevent the lock washer from loosening, install the lock washer by bending the pawl and engaging the lock nut. Be sure to use a new lock washer.

※ A, When installing the Ultra Oil Pump on a chaly 50 (FNO, CF50-3000031~) chaly 70 (FNO, CF70-3000029~), replace the oil pump cover with a stock flat type cover. (No cover gasket is used: see the figure below. The cover gasket is not in use.)