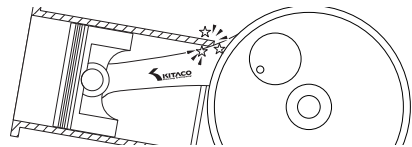


HEAVY DUTY CRANKSHAFT & H-BEAM CONNECTING ROD

Part No.	(CRANKSHAFT ASSY) 309-1432100	(CONNECTING ROD) 309-1432190
APPLICATION	GROM (JC61) NEO BIG BORE KIT REPAIR PARTS	

CAUTION

Stock bore ($\phi 52.4$) & 133cc ($\phi 54$) are not usable as H shape conrod interferes with cylinder (see right image)
 This crankshaft is for replacement of Kitaco big bore kit.
 Refer to Kitaco big bore kit instruction as well as HONDA SERVICE MANUAL for installation / adjustment.
 Please refer to HONDA SERVICE MANUAL for things which are not written in the sheet.



- Thank you for purchasing Kitaco product. Read and understand the instruction before installing.
- Please keep the instruction for later needs.

ATTENTIONS (MUST READ)

- We are not responsible for damages and accidents caused by assembling mistake and improper setting.
- Do not modify the way which is not listed or it will cause damage and trouble.
- Please ask authorized mechanic for assembling and setting.
 Ask a specialist at specialty shop if you do not understand the role of the surrounding parts.
- Refer to the manufacturer HONDA service manual when installation.
- Bolts and nuts may get loosen by engine vibration.

⚠ Since assembly of the connecting rod demands exacting tolerance, the disassembly and reassembly of the crankshaft should only be performed by experienced mechanics with the necessary tools and equipment.

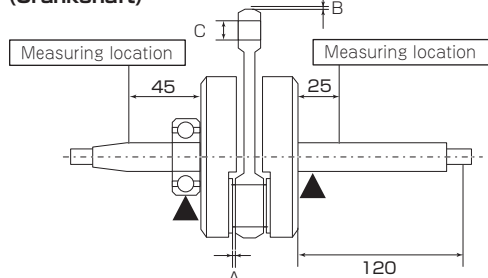
PACKING LIST		309-1432100	309-1432190	Remarks
Name	Part No.	Qty.		
CRANKSHAFT ASSY	309-1432100	1	-	Light side : already press-fitted
BEARING # 63/22X	315-1413010	1	-	Right side : Press-fit to crankcase side required
CONNECTING ROD	-	-	1	
CRANK PIN	-	-	1	
BIG END BEARING	-	-	1	

SERVICE GUIDE

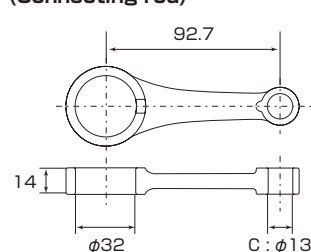
Unit : mm

ITEM	STANDARD	SERVICE LIMIT
A Connecting rod side clearance	0.10 ~ 0.35	0.5
B Connecting rod radial clearance	0.006 ~ 0.020	0.05
C Connecting rod small end I.D.	13.010 ~ 13.028	13.05
D Runout	-	TIR 0.10

(Crankshaft)



(Connecting rod)



● Kitaco assumes no responsibility for accuracy, completeness or sufficiency of the information contained in this document.

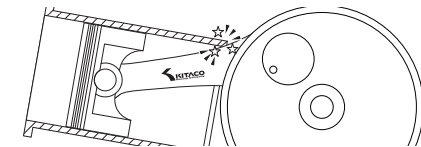


HEAVY DUTY CRANKSHAFT & H-BEAM CONNECTING ROD

Part No.	(CRANKSHAFT ASSY) 309-1432100	(CONNECTING ROD) 309-1432190
APPLICATION	GROM (JC61) NEO BIG BORE KIT REPAIR PARTS	

CAUTION

Stock bore ($\phi 52.4$) & 133cc ($\phi 54$) are not usable as H shape conrod interferes with cylinder (see right image)
 This crankshaft is for replacement of Kitaco big bore kit.
 Refer to Kitaco big bore kit instruction as well as HONDA SERVICE MANUAL for installation / adjustment.
 Please refer to HONDA SERVICE MANUAL for things which are not written in the sheet.



- Thank you for purchasing Kitaco product. Read and understand the instruction before installing.
- Please keep the instruction for later needs.

ATTENTIONS (MUST READ)

- We are not responsible for damages and accidents caused by assembling mistake and improper setting.
- Do not modify the way which is not listed or it will cause damage and trouble.
- Please ask authorized mechanic for assembling and setting.
 Ask a specialist at specialty shop if you do not understand the role of the surrounding parts.
- Refer to the manufacturer HONDA service manual when installation.
- Bolts and nuts may get loosen by engine vibration.

⚠ Since assembly of the connecting rod demands exacting tolerance, the disassembly and reassembly of the crankshaft should only be performed by experienced mechanics with the necessary tools and equipment.

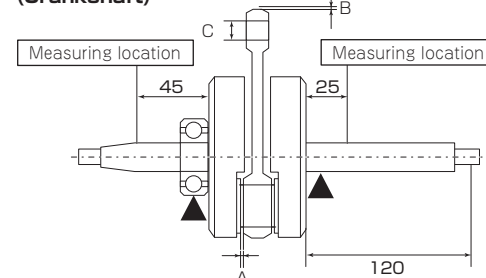
PACKING LIST		309-1432100	309-1432190	Remarks
Name	Part No.	Qty.		
CRANKSHAFT ASSY	309-1432100	1	-	Light side : already press-fitted
BEARING # 63/22X	315-1413010	1	-	Right side : Press-fit to crankcase side required
CONNECTING ROD	-	-	1	
CRANK PIN	-	-	1	
BIG END BEARING	-	-	1	

SERVICE GUIDE

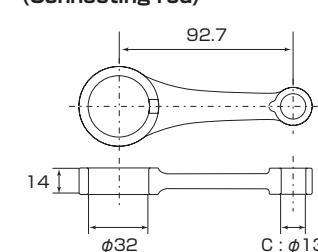
Unit : mm

ITEM	STANDARD	SERVICE LIMIT
A Connecting rod side clearance	0.10 ~ 0.35	0.5
B Connecting rod radial clearance	0.006 ~ 0.020	0.05
C Connecting rod small end I.D.	13.010 ~ 13.028	13.05
D Runout	-	TIR 0.10

(Crankshaft)



(Connecting rod)



● Kitaco assumes no responsibility for accuracy, completeness or sufficiency of the information contained in this document.

