

METER PROTECT FILM

CODE : 000-1158000

APPLICATION

(HONDA) : DUNK (AF74 / 78) / TACT (AF75 / 79)

(YAMAHA) : JOG (AY01) B3K / VINO (AY02) B4K

- Thank you for purchasing Kitaco product. Read and understand the instruction before installing.

ATTENTION (MUST READ)

- This product is to minimize scratches and stains by sticking it on the meter (cannot be completely protected). Do not use this for other purposes.
 - This product is designed and made exclusive for application models, do not use other models. Do not modify the way which is not listed or it will cause damage and trouble.
 - We are not responsible for violation of law or damages and accidents caused by assembling mistake and improper setting.
 - Please ask authorized mechanic for assembling and setting.
 - This instruction sheet is for the instruction for stock condition.
 - Refer to the manufacturer service manual when installation.
 - Bolts and nuts may get loosen by engine vibration. Make sure not to loosen any bolts and nuts before driving.
- ※ Metal/resin products get discolored/rust for ages as well as how to use. Please understand when using

HOW TO HANDLE WITH FILM (Usage precautions)

- This film is to protect meter panel from scratch, etc but do not deal with crack by shock, etc.
- Direct sunlight, ages may get discolored, peeling, etc.
- If you cannot see meter display clearly by scratch, rust for ages, please change the film to new one.
- Flammable : Do not use with fire.
- It is able to attach again when installation, but once attach firmly, it cannot attach again.

230904 Y-H



3-8-13 NAGATA, HIGASHI-OSAKA, OSAKA, JAPAN

HOW TO INSTALL

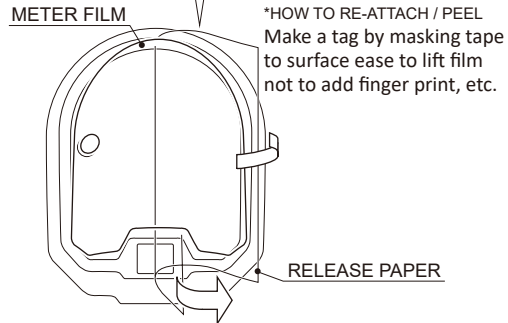
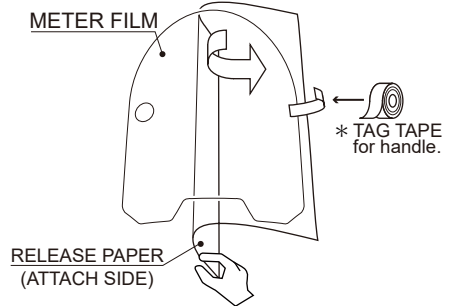
※ Make sure where to attach before installation.

- 1) Clean the dust, grease, etc on the surface.
- 2) Remove half of the release paper of the meter film (attach side). (Be careful not to stain finger print, grease, etc.) For smooth installation, follow steps below to attach again.

* Make a tag by masking tape to lift the film.

- 3) Match the meter panel left side shape or corner, attach slowly and lightly.
- ※ It attaches itself, therefore put on the meter panel and attach automatically to some extent.
- ※ Do not try to attach again and again. It might cause of stain dust and decrease adsorption power.

Remove half of release paper.



● HOW TO DISCHARGE AIR BUBBLE

- 4) After attaching, slide soft cloth from center to outer for discharge remaining air bubble. Please hold down the edge (dotted line) as same for finish.

[ATTENTION] Be careful not to hold down with hard thing, it cause of break, scratch, etc.

- 5) After attaching, do not touch for half to one day to be completely attachd.

