

LIGHT MANUAL CLUTCH KIT / LIGHT 3 DISK DRIVE KIT for MONKEY NO.1/2		
CODE	LIGHT MANUAL CLUTCH KIT : 307-1123100	LIGHT 3 DISK DRIVE UNIT : 307-1123510
APPLICATION	MONKEY ENGINE TYPE AUTO CLUTCH MODEL (Enhance auto clutch to manual 3 disk clutch) *In case of DAX / CHALY, rear brake return spring might interrupt to case cover, moving spring, etc are required.	MONKEY ENGINE TYPE MANUAL CLUTCH MODEL (Enhance single clutch to 3 disk clutch) *Auto clutch and secondary clutch as CD90, etc are not usable.
REMARK	Each specified tool, rubber seal and parts are required to install this product.	
	SPECIFIED TOOL □CLUTCH OUTER HOLDER (depending on model and year) □CENTER LOCK NUT WRENCH (674-1432900) □TORQUE WRENCH OTHER PARTS □L LEVER & CABLE SET	SPECIFIED TOOL □CLUTCH OUTER HOLDER (674-1013950) □CENTER LOCK NUT WRENCH (674-1432900) □TORQUE WRENCH
ADVICE	*Primary reduction ratio is higher compared to stock (except monkey auto clutch). To get stock feeling, 2 teeth down front sprocket or 4 teeth up of rear sprocket.	*Stock clutch lever comp stroke is not enough, clutch might not work well. In that case, please change to option Kitaco clutch lever comp. ○ CLUTCH LEVER COMP (307-1016013)


●Thank you for purchasing Kitaco product. Read and understand the instruction before installing.


●Please use this sheet as a setting manual after installation.


*Replacement parts does not include instruction sheet. Please keep this sheet safe.


ATTENTION (MUST READ)

- This product is reinforce clutch for tuned engine. Avoid clutch slip and increase durability. Transmitting engine power to tires. Please install engine suitable for performance. The manual clutch kit is not only reinforce clutch, but also changing auto clutch to manual one. Clutch operation is required. After installation, get used to clutch operation gradually.
- Allowable rpm is less than 12,000rpm. If over it, it might cause of breaking clutch, other engine parts and accident.
- This product is for racing use.
- We are not responsible for violation of law or damages and accidents caused by assembling mistake and improper setting.
- Please ask authorized mechanic for assembling and setting. Ask a specialist at specialty shop if you do not understand the role of the surrounding parts.
- Do not modify the way which is not listed or it will cause damage and trouble.
- Refer to the manufacturer service manual when installation.
- Bolts and nuts may get loosen by engine vibration. Make sure not to loosen any bolts and nuts before driving.
- Apply engine oil to the parts when assembling them.

 **FLAMMABLE**
Inflammable
high gasoline is used
during operation.

 Do not touch the engine parts (cylinder, crankcase, muffler, engine oil, etc) right after engine operation. Make sure to start the installation after the engine parts are completely cool.

 This sheet is intended for the person who has basic knowledge for maintenance. Do not operate if you do not have skill and knowledge.

 Do not touch rotating gear or other rotating parts. Do not rotate tire, etc.

HOW TO INSTALL

*Depending on the models, required tools are different. Please refer to the each model service manual.

- Remove drain bolt to drain engine oil completely.
 - ※ The parts might be stuck to gasket connecting section, remove all of them with scraper, etc. Be careful not to scratch.
 - ※ Please change gasket and seal to new one
- Remove 8pcs of M6 bolts, right side crank case cover, its gasket and 2pcs of dowel pin.
- [MANUAL CLUTCH]**
Remove oil through, bearing, 4pcs of M5 screws, clutch outer cover and its gasket. Reuse bearing.
[AUTO CLUTCH]
Remove clutch lifter lever from gear shift spindle, lifter ball returner, oil through, oil through spring, lifter cam and bearing from clutch assy, 4pcs of M5 screws, clutch outer cover and its gasket.
- Widen lock washer claw. Loosen lock nut with specified tool center lock nut wrench while fixing clutch assy with specified tool clutch outer holder. Remove the all parts that installed to crank shaft right side includes stock clutch assy. (Refer to the clutch assy removing / installing illustration on No,2)
 - Remove circlip from main shaft and primary driven gear.
 - ※ (Move to 9 for install 3 disk drive unit / move 6 for install manual clutch kit)
 - Remove bolt, drum stopper arm, its spring, drum stopper and side plate.
- Pull stock gear shift spindle out. Install attached spindle collar and shift return spring to attached spindle. Set to crank case.
- Set spindle shift arm to shift drum pin. Put side plate, drum stopper, drum stopper spring and drum stopper arm back in the reverse order of removing.
 - ※ Must to set drum stopper arm to drum stopper.
 - ※ When installing, move shift spindle to make sure the gear changes correctly.
- Assemble the kit each parts and bearing that removed on 3 to main shaft and crank shaft as illustration.
 - ※ Apply engine oil to each parts for assemble.
 - ※ Tighten clutch outer plate installation bolt diagonally evenly.
 - ※ Set lock washer with OUT SIDE mark surface is out side.
 - ※ Bend lock washer claw to install lock nut notch. (Refer to the No,2 clutch assy removing / installing)
- Assemble attached each parts to kit right side crank case cover. Install to crank case with attached new gasket and bolt.
 - ※ Crank case front upper side installation bolt length is different from model and year. 2 kinds of bolts are attached, please use the matching length one.
- Install engine to vehicle.
- Put the removed parts back. Fill the oil to finish installation. Make sure not to leak any oil. (In case of manual clutch kit, install clutch lever & cable set sold separately.)
 - ※ Make sure the clutch works correctly. (Please adjust clutch by adjust nut inside the clutch cover : refer to the No,2) Route the cable not to prevent riding.
 - ※ Engine oil amount is different from stock. Please check with oil filler cap and adjust.
 - ※ Unable to start engine with kick while clutch is disengaged.
 - ※ Unable to start engine with kick other than the gear is neutral. Be careful of it.

LIGHT MANUAL CLUTCH KIT / LIGHT 3 DISK DRIVE KIT for MONKEY NO.2/2

▼PACKING LIST

FIGURE	CODE	NAME	307-1123100	307-1123510
A1	060-0500040	CAP BOLT M6×40	x5	-
A2	060-0500055	CAP BOLT M6×55	x2	-
A3	060-0500065	CAP BOLT M6×65	x1	-
A4	060-0500100	CAP BOLT M6×100	x1	-
A5	053-0511010	FLAT SCREW M5×10	x2	-
A6	307-1016002	CLUTCH COVER	(x1)	-
A7	966-1015005	CLUTCH COVER GASKET	x1	-
A8	063-0511015	FLAT SCREW M6×15	x1	-
A9	307-1016018	CLUTCH LIFTER SET PLATE	(x1)	-
A10	307-1016019	CLUTCH ADJUSTING BOLT	(x1)	-
A11	001-0500006	NUT M6	x1	-
A12	307-1016017	CLUTCH LIFTER PLATE	(x1)	-
A13	307-1016015	CLUTCH LEVER STOPPER PIN	(x1)	-
A14	307-1013031	OIL SEAL 12×21×4 PUSH ROD SIDE	x1	-
A15	307-1016113	CLUTCH LEVER COMP (for 3 disk)	x1	OP
A15A	967-1015004A	O RING 13.2×1.8 (specified for attached clutch lever)	(x1)	-
A16	307-1016014	CLUTCH LEVER SPRING	x1	-
A18	307-1013032	OIL SEAL 13.8×24×5 KICK SIDE	x1	-
A19	307-1016001	R CRANK CASE COVER	(x1)	-
A20	307-1016016	CLUTCH PUSH ROD	x1	-
A21	966-1015004	R CRANK CASE COVER GASKET	x1	x1
B1	307-1016025	OIL THROUGH	x1	-
B2	307-1013026	OIL THROUGH SPRING	x1	-
B3	307-1016027	OIL THROUGH GUIDE	x1	-
B4	052-0505012	OVAL SCREW M5×12	x4	-
B5	307-1016005	CLUTCH OUTER COVER	x1	-
-	307-1123500	3 DISK DRIVE UNIT	x1	-
C1	966-1016006	CLUTCH OUTER COVER GASKET	(x1)	x1
C2	307-1016028	CLUTCH CENTER NUT 14mm	(x1)	x1
C3	307-1016030	LOCK WASHER (TAPERED) 14mm	(x1)	x1
C4	307-1016029	CLUTCH LOCK WASHER (CLAW)	(x1)	x1
C5	307-1016012	CLUTCH DUMPER SPRING	(x4)	x4
C6	307-1016004	CLUTCH OUTER	(x1)	x1
C7	307-1016011	CLUTCH SPRING	(x4)	x4
C8	307-1016010	DRIVE PLATE	(x1)	x1
C9	307-1123003	CLUTCH DISK (3 DISK)	(x3)	x3
C10	307-1123009	CLUTCH PLATE C (3 DISK)	(x3)	x3
C11	307-1016020	SET RING 101.5mm	(x1)	x1
C12	307-1016006	CLUTCH CENTER	(x1)	x1
C13	307-1016021	DRIVE GEAR 18T	(x1)	x1
C14	307-1016007	CLUTCH CENTER GUIDE	(x1)	x1
C15	307-1016067	PRIMARY DRIVEN GEAR 67T	(x1)	x1
D	307-1016080	GEAR SHIFT SPINDLE SET (MONKEY)	x1	-
	307-1129080	GEAR SHIFT SPINDLE SET (XR50R / CRF50F)	OP	-
E	307-1013600	REINFORCED CLUTCH SPRING SET (OPTION PARTS)	OP	OP

▲ () is 1 SET QTY.
▲ OP is option parts. Please purchase separately.

STOCK PARTS ON ILLUSTRATION

FIGURE	NAME	QTY	FIGURE	NAME	QTY	FIGURE	NAME	QTY
N1	OIL FILLER CAP	× 1	N6	COLLAR	× 1	N11	DOWEL BOLT M6	× 1
N2	O RING	× 1	N7	SHIFT DRUM PIN	× 3	N12	DRUM STOPPER SPRING	× 1
N3	DOWEL PIN 8×12	× 2	N8	DOWEL PIN	× 2	N13	DRUM STOPPER ARM	× 1
N4	CIRCLIP 17mm	× 1	N9	SIDE PLATE	× 1			
N5	OIL THROUGH BEARING	× 1	N10	SHIFT DRUM STOPPER	× 1			

TORQUE		
FIGURE	NAME	1kgf · m = 9.80665N · m
A1	M6×40 CAP BOLT	12N · m (1.2kgf · m)
A2	M6×55 CAP BOLT	12 (1.2)
A3	M6×65 CAP BOLT	12 (1.2)
A4	M6×100 CAP BOLT	12 (1.2)
B4	OVAL SCREW (M5×12)	5 (0.5)
C7	CLUTCH CENTER NUT (14mm)	44 (4.5)
N12	DOWEL BOLT M6	12 (1.2)

▼REMOVING / INSTALLING

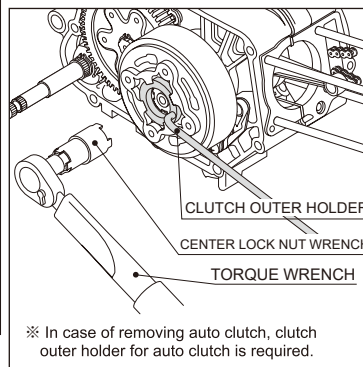
CLUTCH ASSY (with specified tool)

1) Fix with clutch outer holder. Remove center nut with center lock nut wrench. Remove clutch assy.

2) Tighten with attached lock washer (tapered / claw), center nut and specified torque. Fix with clutch outer holder, tighten center nut with center lock nut wrench.

※ Tighten clutch center nut with torque wrench and 44N · m (4.5kgf · m). If over tightening, it causes of parts deformation and unable to release clutch. Do not use impact wrench.

※ Bend lock washer claw and install to center nut notch.



※ In case of removing auto clutch, clutch outer holder for auto clutch is required.

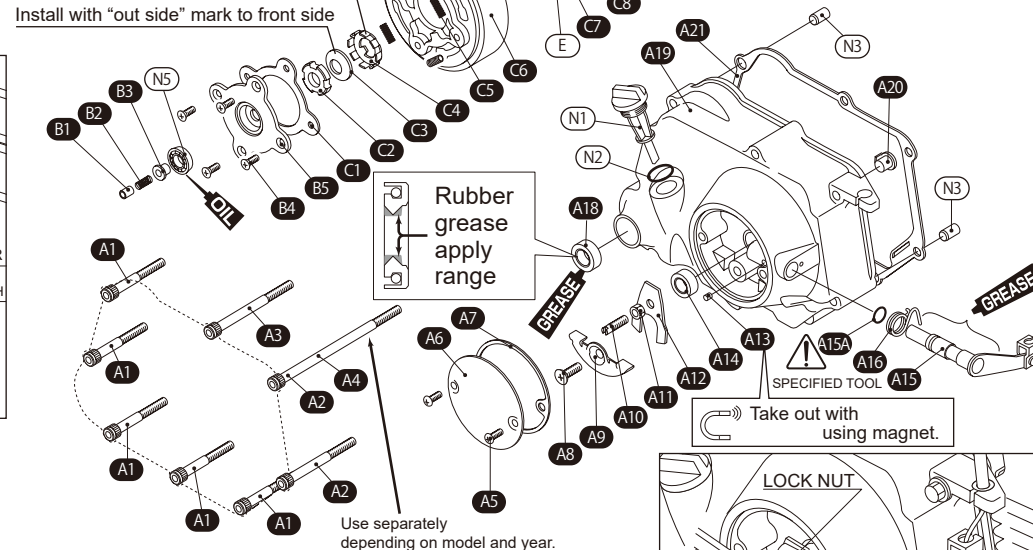
※ Basically, reuse genuine parts if it is unattached. If there is a hard degradation like a blem, fatigue and wear etc on the reuse parts, please change to new ones.

ATTENTION WHEN ASSEMBLING
Clutch assy is shipped out with temporarily assembling. When assembling, please apply oil to each parts (especially drive part). If forget, it causes of burning. Be careful of it.

Refer to the detail
 Apply oil
 Apply grease
 Apply screw lock

Please use specified tool when removing / installing. (Refer to the illustration on the left)

Extend claw when removing
Bend claw after installing
Install with "out side" mark to front side



CLUTCH ADJUSTMENT

- Install engine to vehicle and adjust while clutch cable is installed.
- 1) In case of manual clutch, remove clutch cover.
- 2) Loosen lock nut and adjust adjuster with (-) driver. (Turn adjuster once to left side.)
- 3) Turn adjuster to right side until feel resist, once felt the resist, loosen for 1/8 and tighten lock nut. (TORQUE : 12N · m / 1.2kgf · m)
- ※ Auto clutch adjuster rotating direction is reverse.

