

HIGH GEAR KIT

CODE	305-1155010	305-1427010
APPLICATION	ZOOMER-X (JF52)	Dio110 (JF31)
REMARK	Secondary reduction ratio (first : stock 2.833→high gear 2.722) (second : stock 3.750→high gear 3.462)	

Thank you for purchasing Kitaco product. Read and understand the instruction before installing.

ATTENTION (MUST READ)

- This product makes scooter reduction ratio to be high geared. More effective for power up engine.
- Setting weight roller and reinforce might be required for bring out performance. Please do setting worth to each vehicle. Recommend to check wear of weight roller, drive belt, etc. (Unable to bring out performance with wear progress and uneven wear.)
- We are not responsible for violation of law or damages and accidents caused by assembling mistake and improper setting.
- Do not modify the way which is not listed or it will cause damage and trouble.
- Please ask authorized mechanic for assembling and setting. Ask a specialist at specialty shop if you do not understand the role of the surrounding parts.
- Refer to the manufacturer service manual when installation.
- Bolts and nuts may get loosen by engine vibration. Make sure not to loosen any bolts and nuts before driving.
- Please apply mission oil to assembling each parts.
- This product is designed and made exclusive for application vehicle, do not use other models.



FLAMMABLES
Inflammable gasoline is used during operation. Using flammable things such as smoking is strictly prohibited.



As for cylinder, crankcase, exhaust pipe, etc during and after engine operation are extremely hot. Do not touch carelessly.



This instruction sheet is for the person who has basic knowledge for maintenance. Do not operate if you do not have skill and knowledge



Do not touch spinning gears or other parts. Do not rotate tires while operation.

OPTION PARTS (Sold separately.)

- ▼Specified tools are required other than genuine tools.
- ※In case of do not have specified tool, please ask special shop for installation.

RECOMMEND GEAR OIL	HONDA STOCK ULTRA E1 (For 4 cycle scooter)	-	SAE 10W-30 equivalent product changing : around 0.14L / disassembling : around 0.16L
KITACO SPECIFIED TOOL	PULLEY HOLDER	674-0500900	For stop clutch outer rotate.

PACKING LIST				ZOOMER-X	Dio110
FIGURE	NAME	CODE	QTY		
A	COUNTER GEAR	49T	305-1427001	× 1	× 1
B	COUNTER SHAFT	13T	305-1427002	× 1	× 1
C	TRANSMISSION CASE GASKET (KVB)		305-1155004	× 1	-
	TRANSMISSION CASE GASKET (KZL)		305-1427004	-	× 1

STOCK PARTS LIST

FIGURE	NAME	QTY
1	CRANKCASE COVER	× 1
2	DOWEL PIN	× 2
3	FINAL GEAR SHAFT	× 1
4	TRANSMISSION CASE	× 1
5	TRANSMISSION CASE BOLT	× 8

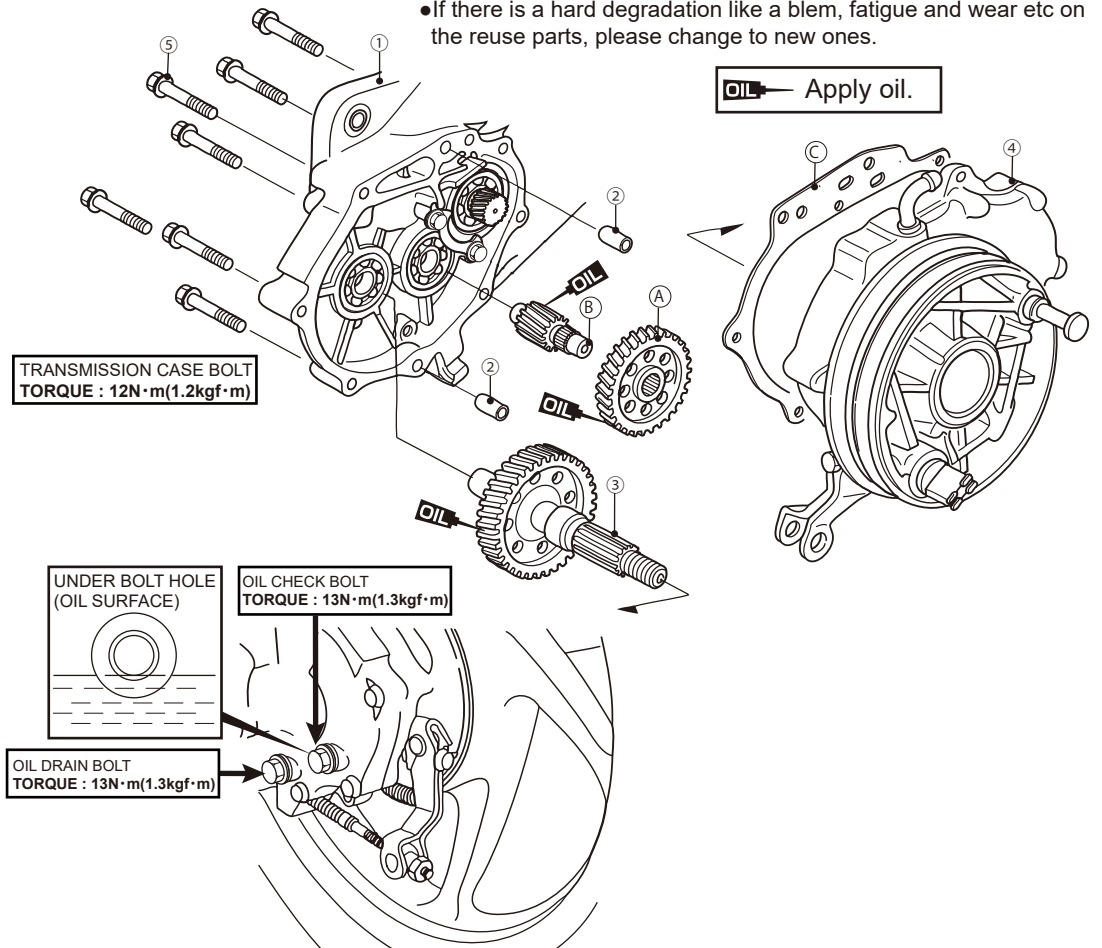
HOW TO INSTALL

- Illustration and instruction is just a reference. Refer to the service manual when installation.

- 1 Use centerstand to stable vehicle.
- 2 Remove muffler and rear wheel. Remove rear brake cable and breather tube from transmission case.
- 3 Remove crankcase cover installation bolt (13pcs) to remove crankcase cover.
- 4 Remove clutch outer, clutch/driven face ASSY and belt by using specified tool (pulley holder).
- 5 Remove transmission case installation bolt (8pcs) to remove transmission case, case cover gasket and dowel pin.
- ※ Transmission oil will be flowing, please receive oil by a sauser, etc. (Remove seals from each case matching section.)
- 6 Remove final gear shaft, counter shaft and counter gear, then change to attached counter gear and install counter shaft and final gear shaft to transmission case.
- ※ Apply engine oil to each gear teeth and shaft.
- 7 Remove old seal that attached to each case completely. Change to attached gasket and install stock dowel pin. Then tighten case cover transmission case with 8pcs bolts firmly. (Tighten diagonally alternately evenly!)
- 8 Put the removed parts back. Remove oil check bolt and pour new stock transmission oil to under bolt hole. Please check carefully of tire rotates correctly and no strange sound.
- ※ Wipe the oil, etc inside crank case completely.
- ※ Change transmission oil after 100km break in.

ATTENTION!

- Basically, reuse stock parts if it is unattached.
- If there is a hard degradation like a blem, fatigue and wear etc on the reuse parts, please change to new ones.



131105 M-T



3-8-13 NAGATA,
HIGASHI-OSAKA,
OSAKA, JAPAN