

Pursuing for "IDEAL", KITACO "IDEAL SEAT" released!!



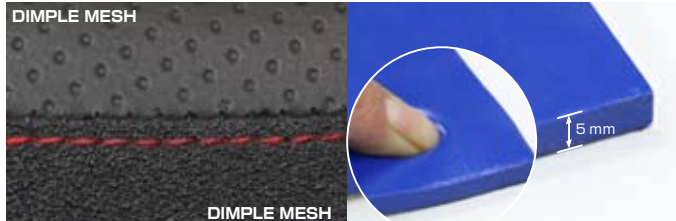
FOR STREET, LONG DISTANCE TOURING, MADE IN JAPAN !

GROM

IDEAL 1 : HARD TO GET TIRED FOR TRAVELING DISTANCE!!

Special gel absorbs shock & vibration to protect your body for long distance touring. Synthetic suede cloth on the side prevents slippage to support knee grip.

IDEAL SEAT SURFACE (SINGLE STITCH) SPECIAL GEL



IDEAL SEAT COMPARISON (168cm TALL)



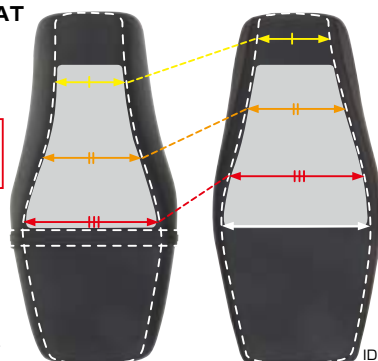
STOCK SEAT

IDEAL SEAT

With lower slope & thicker seats lead best riding position with back step.

COMPARISON of SEAT UPPER SURFACE

BEST FIT TO YOUR BOTTOM!!



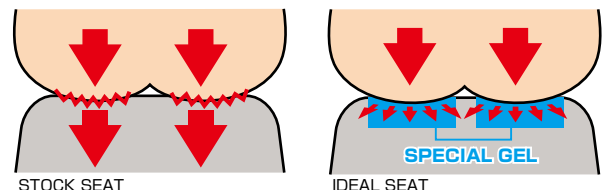
STOCK SEAT

IDEAL SEAT

IDEAL SEAT

STITCH	CODE	PRICE
RED	610-1432000	¥30,000
WHITE	610-1432010	
● UNITED URETHANE SPONGE + SPECIAL GEL ADOPTED ● ALL MADE IN JAPAN		
APPLICATION GROM (JC61)		

* STOCK PASSENGER BELT NOT USABLE.
OPTION PASSENGER BELT (610-1432005 / SOLD SEPARATELY) REQUIRED.



STOCK SEAT

IDEAL SEAT

IDEAL 2 : HARD TO GET HURT BUTTOCKS!!

Special gel with appropriate hardness to disperse body pressure in various directions which is very hard for your bottom to get hurt.

COMPARISON OF IDEAL SEAT & STOCK SEAT



STOCK SEAT

IDEAL 3 : SHAPE / DURABILITY

Flat seat shape with lower slope prevents your bottom come forward. United urethane sponge and special gel for durability.