



CBR

250R

CUSTOMIZED
BY
KITACO



※ There are some prototype parts that do not come onto the market on the picture above.

beginner

tourer

racing

全てのユーザーに走る楽しさを

Items that fits CBR250R

EXHAUST MUFFLER GASKET	XH-20	963-1000020
MUFFLER JOINT GASKET	JPH-5	973-1000005
OIL ELEMENT	FH-5	390-1000050
FRONT BRAKE PAD(CBR250R)	SBS 627	HF : 777-0627000 HS : 777-0627020 RS : 777-0627088 RQ : 777-0627080 DC : 777-0627081
FRONT BRAKE PAD(CBR250R ABS)	SBS 828	HF : 777-0828000 HS : 777-0828020

CBR250R CUSTOM PARTS!

If you're looking for an affordable, smart, capable and fun way to enjoy life on two wheels, the new, fuel-injected CBR250R & Kitaco customize parts offer everything you want!

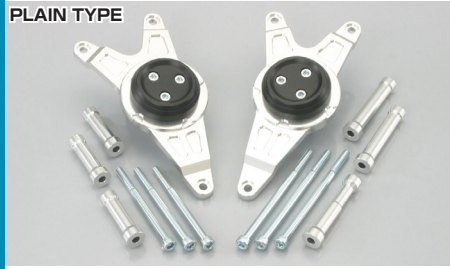


ENGINE SLIDER

○ PLAIN TYPE 553-1818000 ○ CORN TYPE 553-1818100

Protects clutch cover and generator cover from unexpected accidents. Luxury and sporty look with aluminum machined and duracon protector.
● SOLD IN PAIRS

PLAIN TYPE



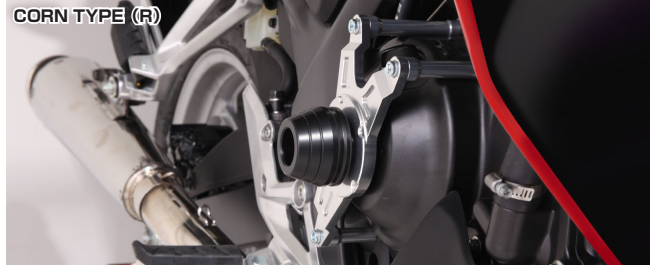
PLAIN TYPE (L)



CORN TYPE



CORN TYPE (R)



FRAMES

TANDEM BACK REST

○ SILVER 652-1818000 ○ BLACK 652-1818200

Best and comfortable backrest for tandem touring. Grab bars come with the pad which are best for safety. Electropolished SILVER & powder coated BLACK are released

● STAINLESS ※ STOCK GRAB BAR not useable

SILVER



BLACK



FRAMES



HELMET HOLDER

○ BLACK 564-1818100 ○ CHROME 564-1818110

Easy to use helmet lock with key. Installs with left side tandem step.

BLACK



CHROME



FRAMES

FENDER LESS KIT

691-1818000

Easy way to refresh its style.

● REFLECTOR included ● STEEL ● BLACK BAKING FINISH



FRAMES

CBR250R CUSTOM PARTS!

If you're looking for an affordable, smart, capable and fun way to enjoy life on two wheels, the new, fuel-injected CBR250R & Kitaco customize parts offer everything you want!



MASTER CYLINDER GUARD

- BLACK 500-1818900
- GOLD 500-1818910
- SILVER 500-1818930

For dress up as well as to protect master cylinder from unexpected accidents.
● ALUMINUM MACHINED

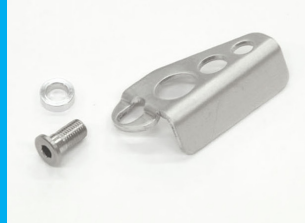
BLACK



GOLD



SILVER



HANDLE PARTS

BAR END CAP

- SILVER (POLISH) 506-1818110
- GOLD (TITANIUM COATING) 506-1818120
- BLACK METALLIC (DIAMOND LIKE CARBON COATING) 506-1818130

In addition to visual feast, it has counterbalance and weather-resistant characteristics.



SILVER

GOLD

BLACK METALLIC



HANDLE PARTS

ALUMINUM MASTER CAP

500-1805110

For dress up of master cylinder reserver cap
● ALUMINUM MACHINED



HANDLE PARTS

TANK COVER

692-1818000

A TANK PAD to protect your tank from riding jacket zipper.
● TWILLED CARBON



EXTENSIONS

ALUMINUM MUFFLER

Affordable and high quality aluminum sporty muffler

- ALUMINUM SILENCER
- SLIP-ON TYPE
- JMCA APPROVED



EXHAUST

STAINLESS MESH BRAKE HOSE

A BRAKE HOSE for direct brake feeling that has high durability.

※ Actual product appearance may vary.



BRAKES

COMING SOON!!!

SPROCKET ● FRONT / REAR UNDER DEVELOPMENT	WINKER LENS ● SMOKE ● STOCK EXCHANGE TYPE	KNUCKLE COVER To protect your hands when windy, rainy and freezing day!	LONG SCREEN For more comfortable long-time touring to reduce direct wind pressure.	i-map ● Adjustable for a variety of tuning pattern ● Original map can be made, by using PC INTERFACE CABLE (sold separately) ● Rev limiter release function built-in

CBR250R CUSTOM PARTS!

If you're looking for an affordable, smart, capable and fun way to enjoy life on two wheels, the new, fuel-injected CBR250R & Kitaco customize parts offer everything you want!