



"KITACO" IS NOT ONLY
A SHARP DRESSER
BUT TOPS IN THE WORLD
OF MOTORCYCLE

KITACO

KITACO NEW PRODUCTS!!

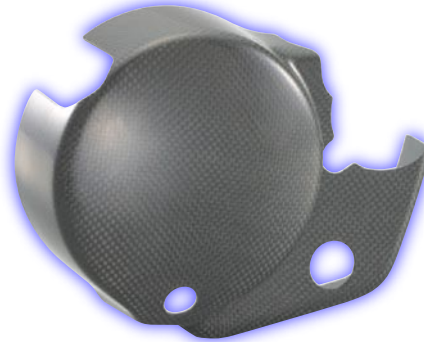
SPECIAL ADVERTISEMENT FOR NEW ITEM
2009 Vol.04

3-8-13,NAGATA,HIGASHI-OSAKA
OSAKA,JAPAN,577-0015

URL <http://www.kitaco.co.jp>

APPE ULTRA CLUTCH COVER PROTECTOR

- Helps protect from damages.
- CARBON (CFRP)
- Double-sided tape attaching type

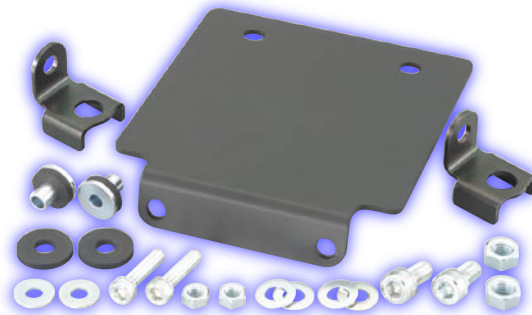


APPLICATION

KITACO ULTRA CLUTCH COVER FOR APE

APE50 (FI model) FENDERLESS KIT

- Resists vibration by rubber mount.
- ALUMINUM/BLACK ALUMITE FINISH
- Fits with stock tail lamp and winker.
- ※ Modification for stock rear fender is required.



APPLICATION

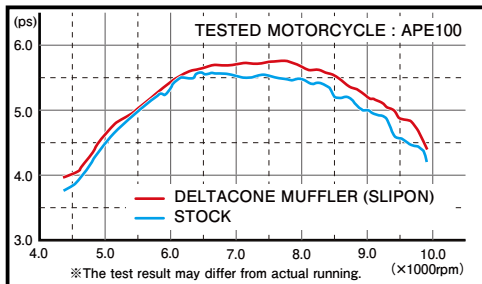
APE50 (FI modal) FNo.AC16-1600001 ~

(OP)

LED TAIL LAMP SET 809-1138310

APE100 DELTACONE MUFFLER (SLIPON)

- JMCA No. 00612102
- Exhaust sound : 83db
- Meets exhaust regulations
- Silencer : STAINLESS



APPLICATION

APE100 FNo.HC07-1600001 ~
FNo.HC13-1000001 ~ (type D)

(OP)

MUFFLER JOINT GASKET (JPH-7) 973-1000007

NOTICE OF CORRECTION - 08-09 K-BOOK -

■ P.465 ALUMINUM WHEEL SET (HONDA SCOOTER/REAR 509-1126510)
Remove DIO(4 stroke) AF62 ALL and TODAY AF6 1 ALL from application.

■ P.587 WINKER KIT (VANVAN200 830-2777000)
INCORRECT) VANVAN200 NH41A ALL → CORRECT) NH41A-100001 ~ 106593

NAME	NO,
APE ULTRA CLUTCH COVER PROTECTOR	660-1413290
APE50 (FI MODEL) FENDERLESS KIT	691-1138000
APE100 DELTACONE MUFFLER (SLIPON)	545-1422770

※ WE ARE WAITING FOR YOUR ORDER!
※ IF YOU HAVE ANY QUESTION, DO NOT HESITATE TO ASK US!